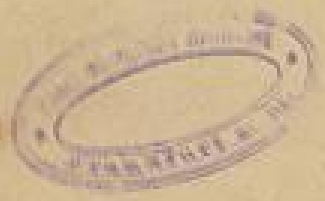


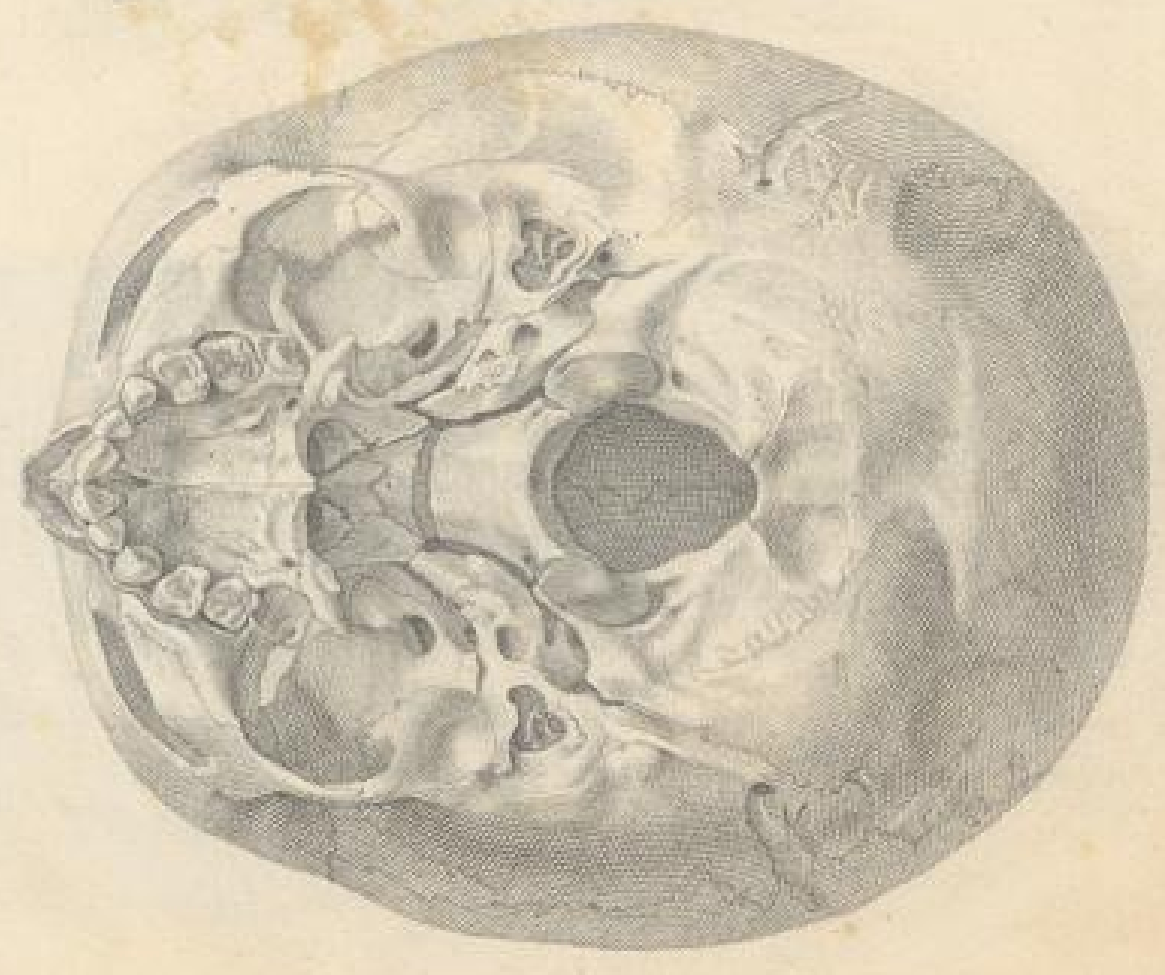
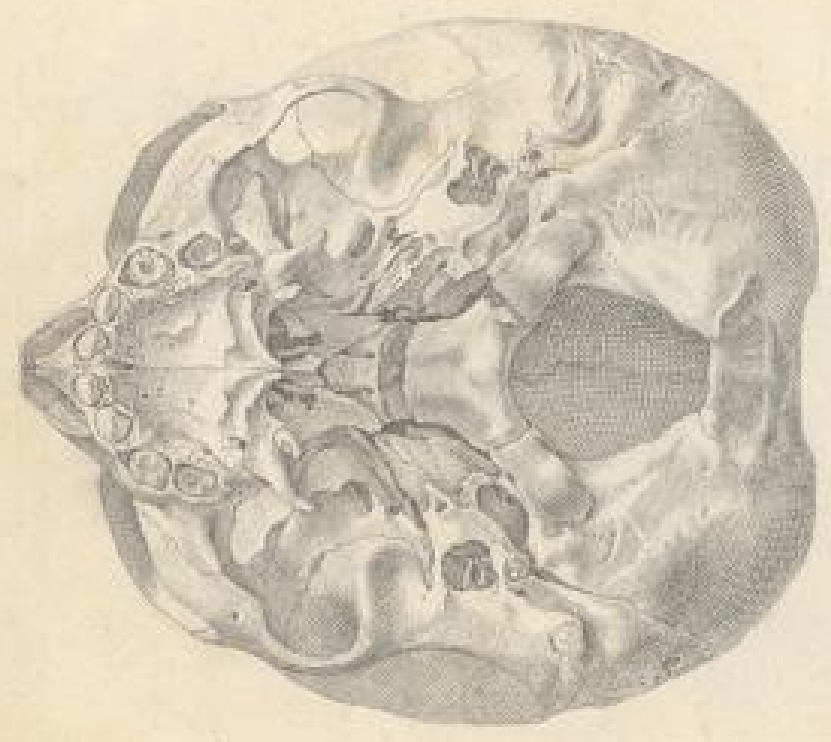
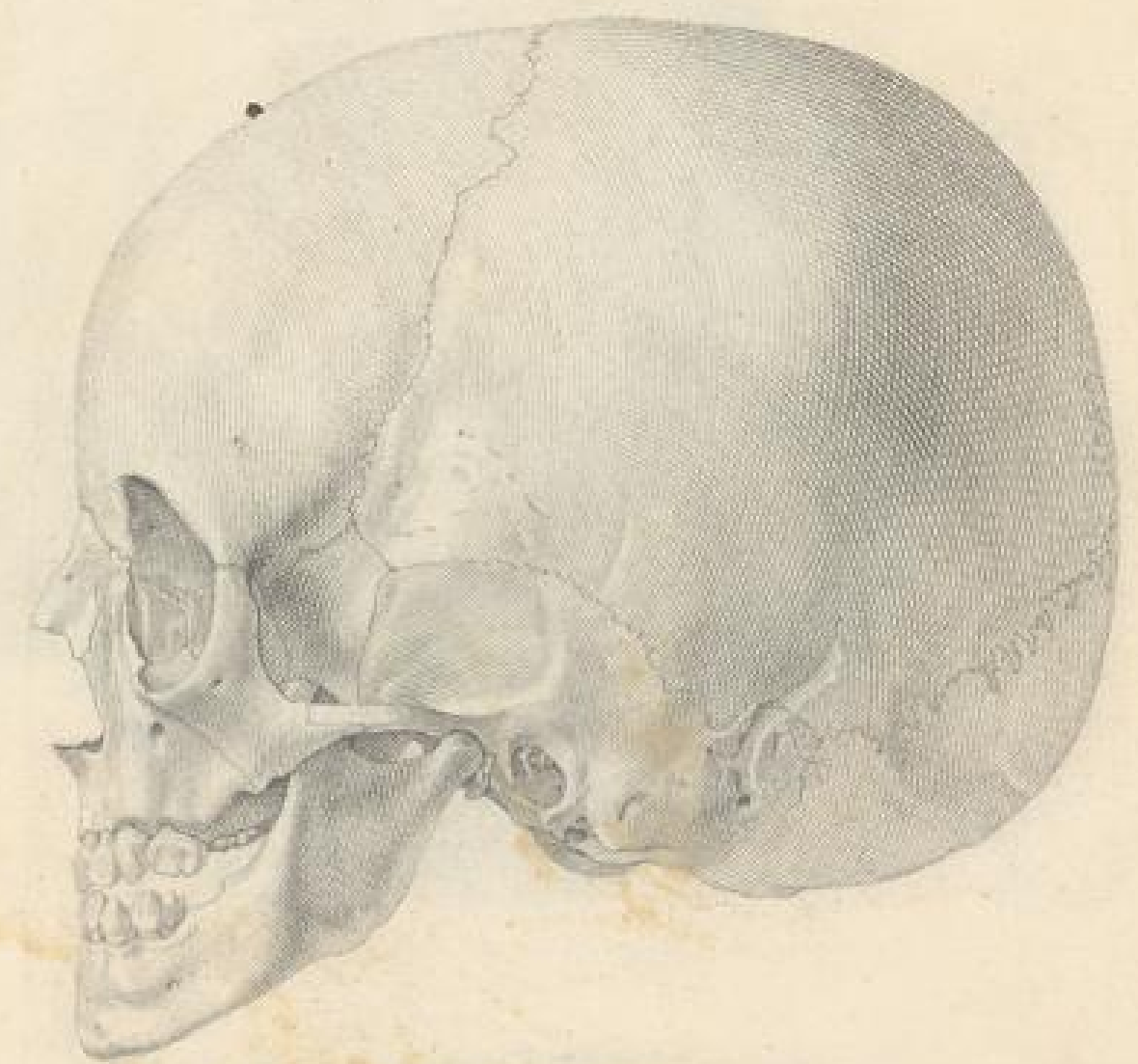
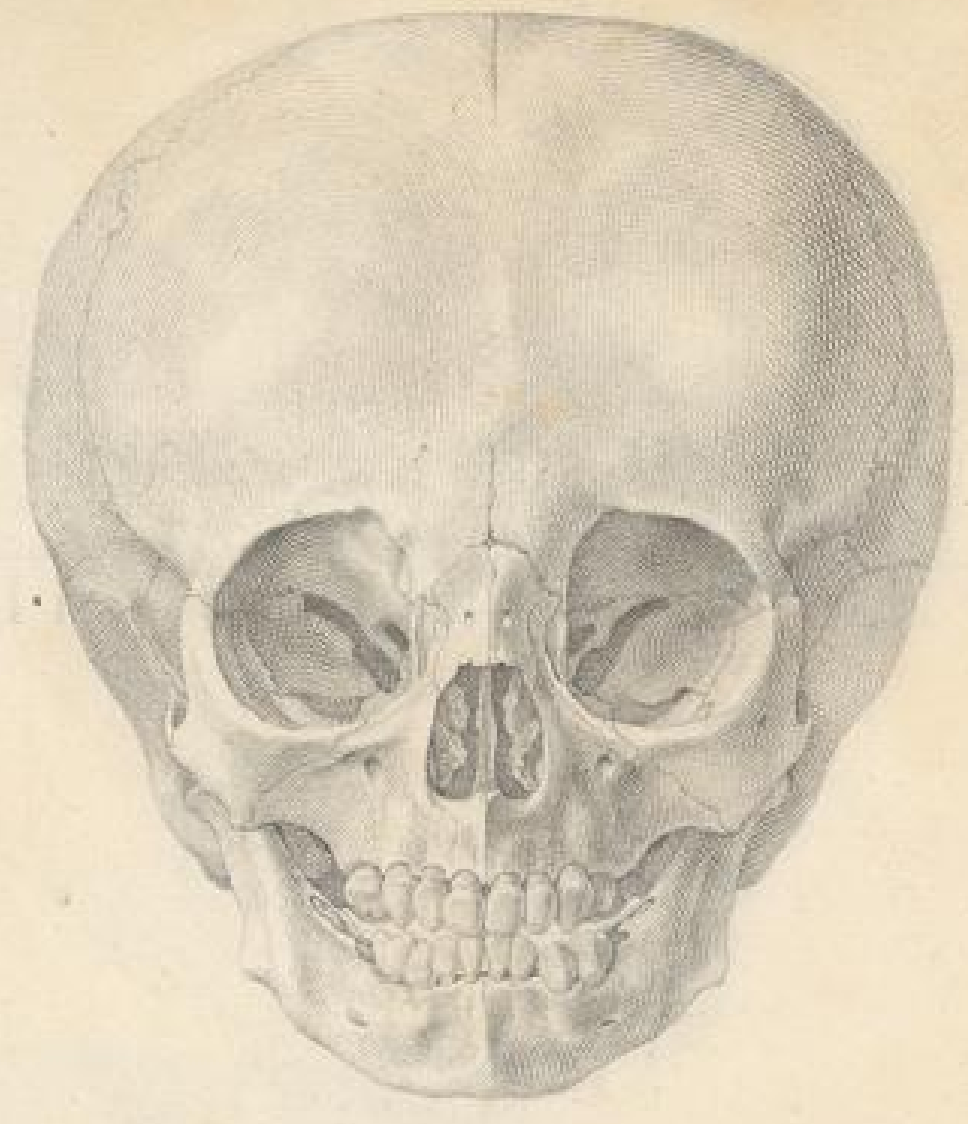
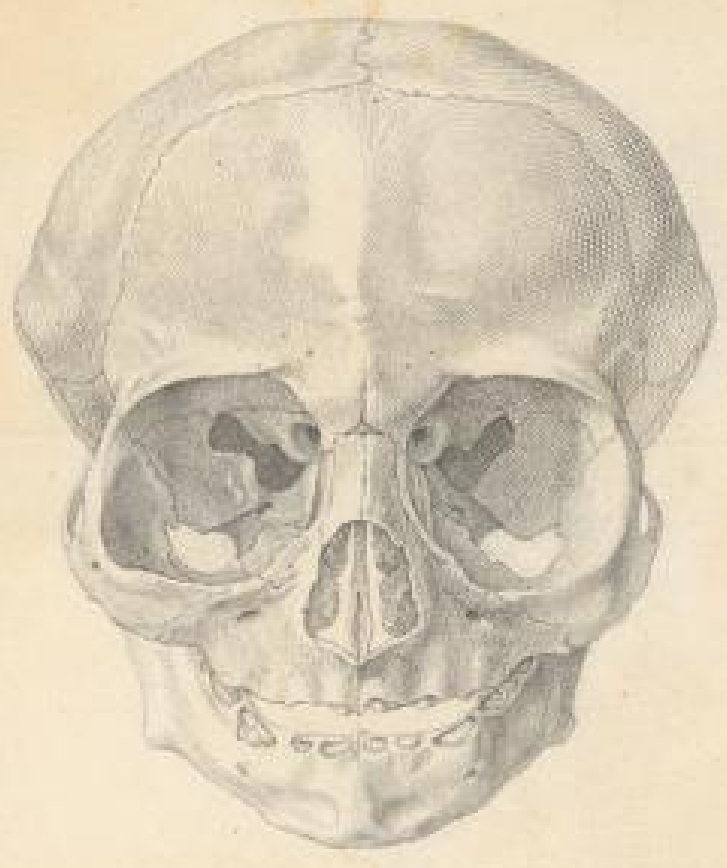


Inkunabelraum

Soe62

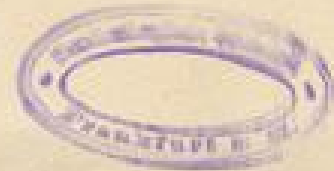
Soe 62



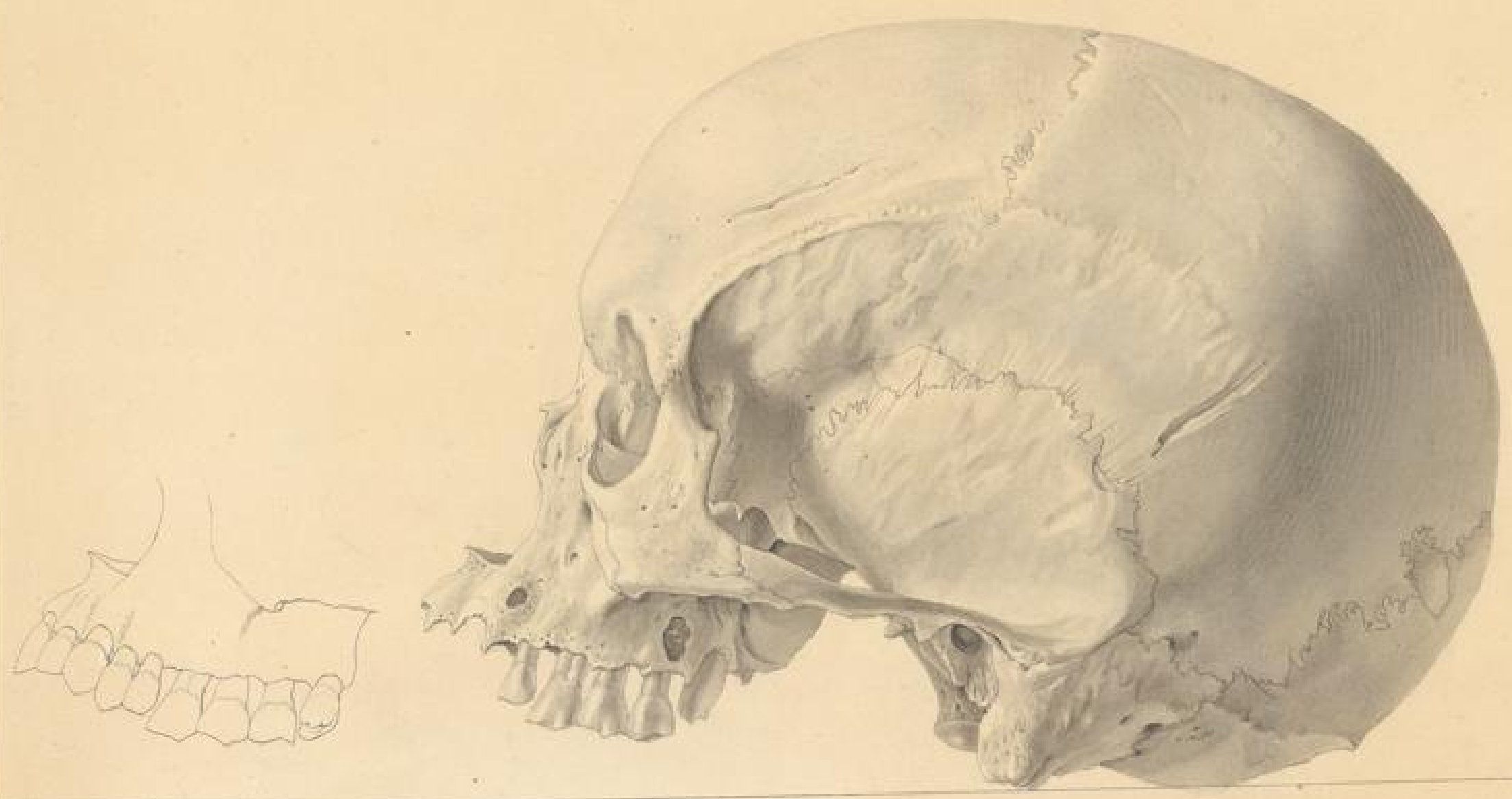


Christ. Koch del. et sculp.

Handwritten text, possibly a signature or title, partially obscured by a stamp.




Gemeinsam sind wir stärker
April 1916



Niger mit sechs Backenzähnen.

Ch. Roestk Del.

Handwritten text in cursive script, likely a signature or a short note.

Handwritten text, possibly a date or a reference number.

86

Handwritten text in cursive script, possibly a signature or a note.

April 1856

Feb. 11



CRANIUM FOSSILE

*ex Antro Baruthiano Gailenreuth,
crista terribiliter fracta et sanata.*

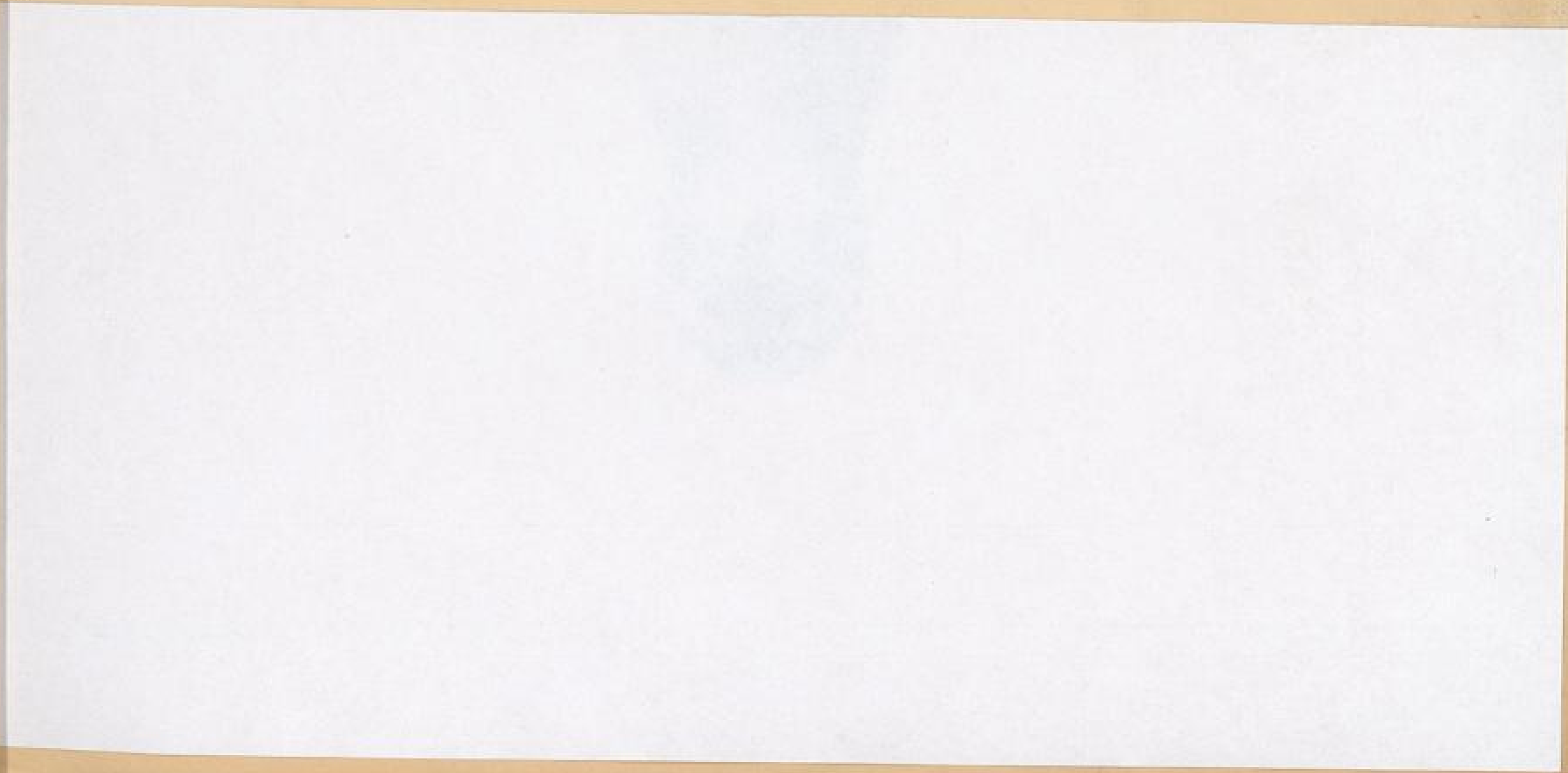
BC
Linné

Handwritten text in cursive script, likely a list or inventory of items, possibly related to geological or mineralogical specimens.

Handwritten text at the bottom of the page, possibly a signature or date.









TAB.



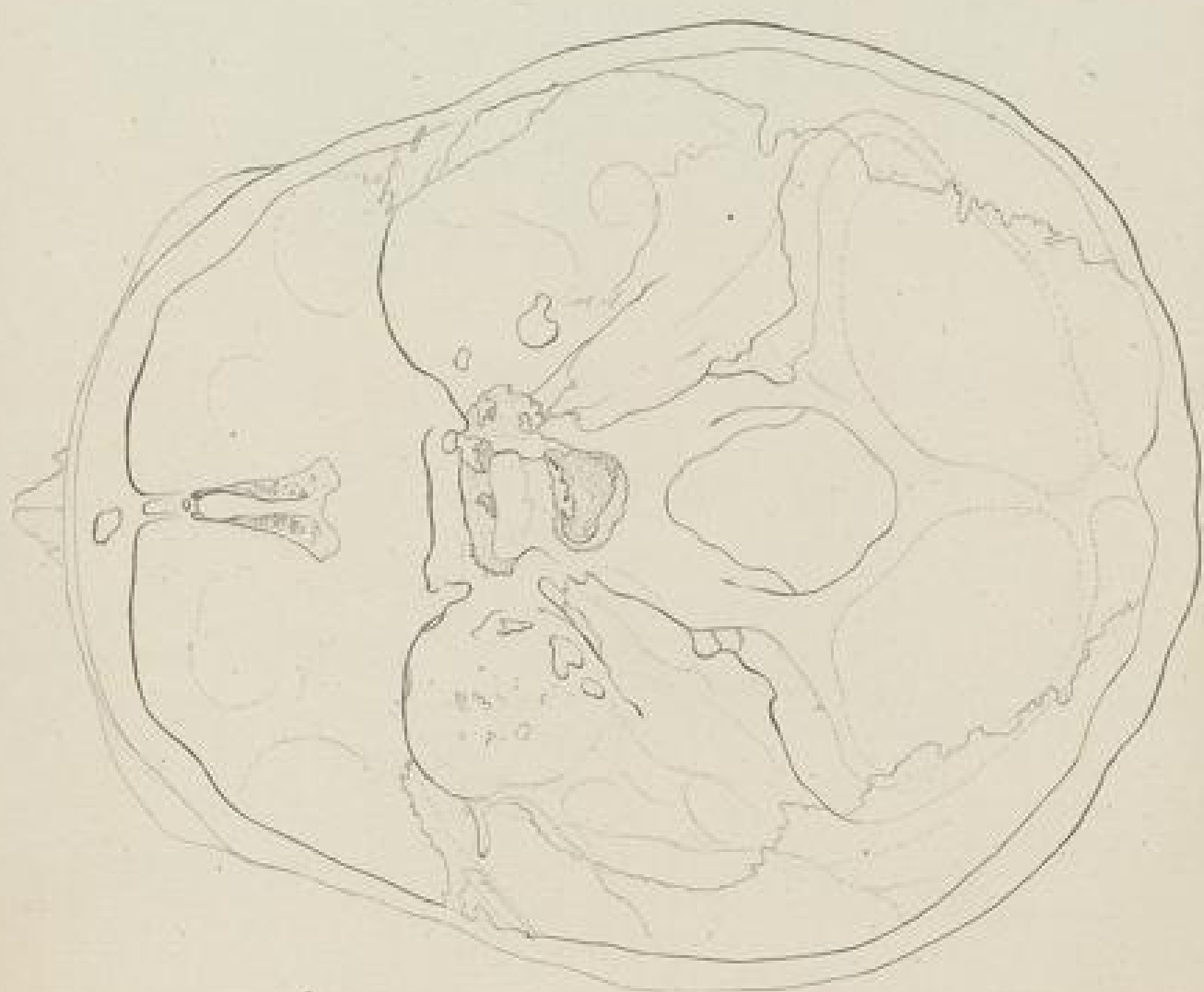
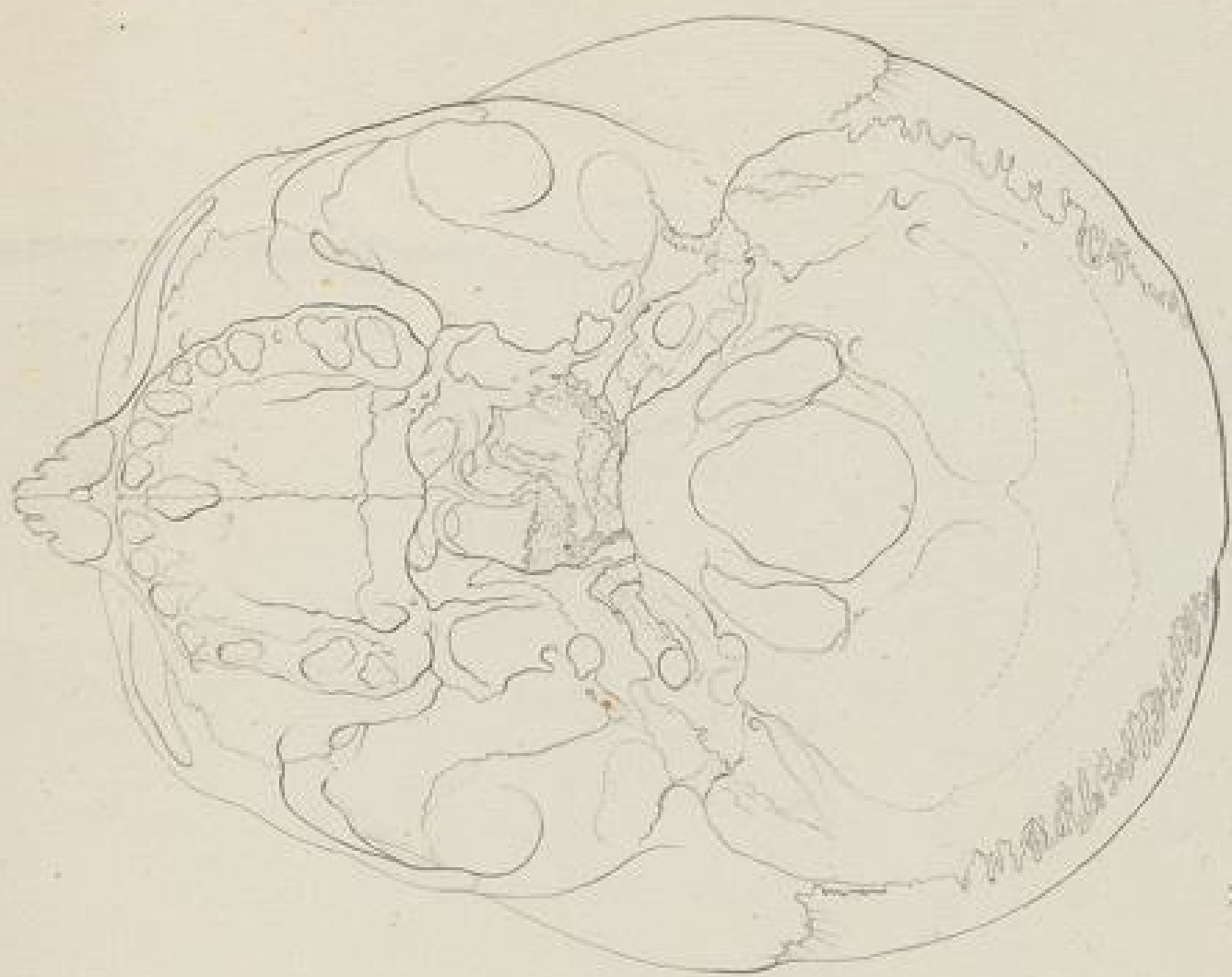
30

Christ. Döbel ad nat. pinus.





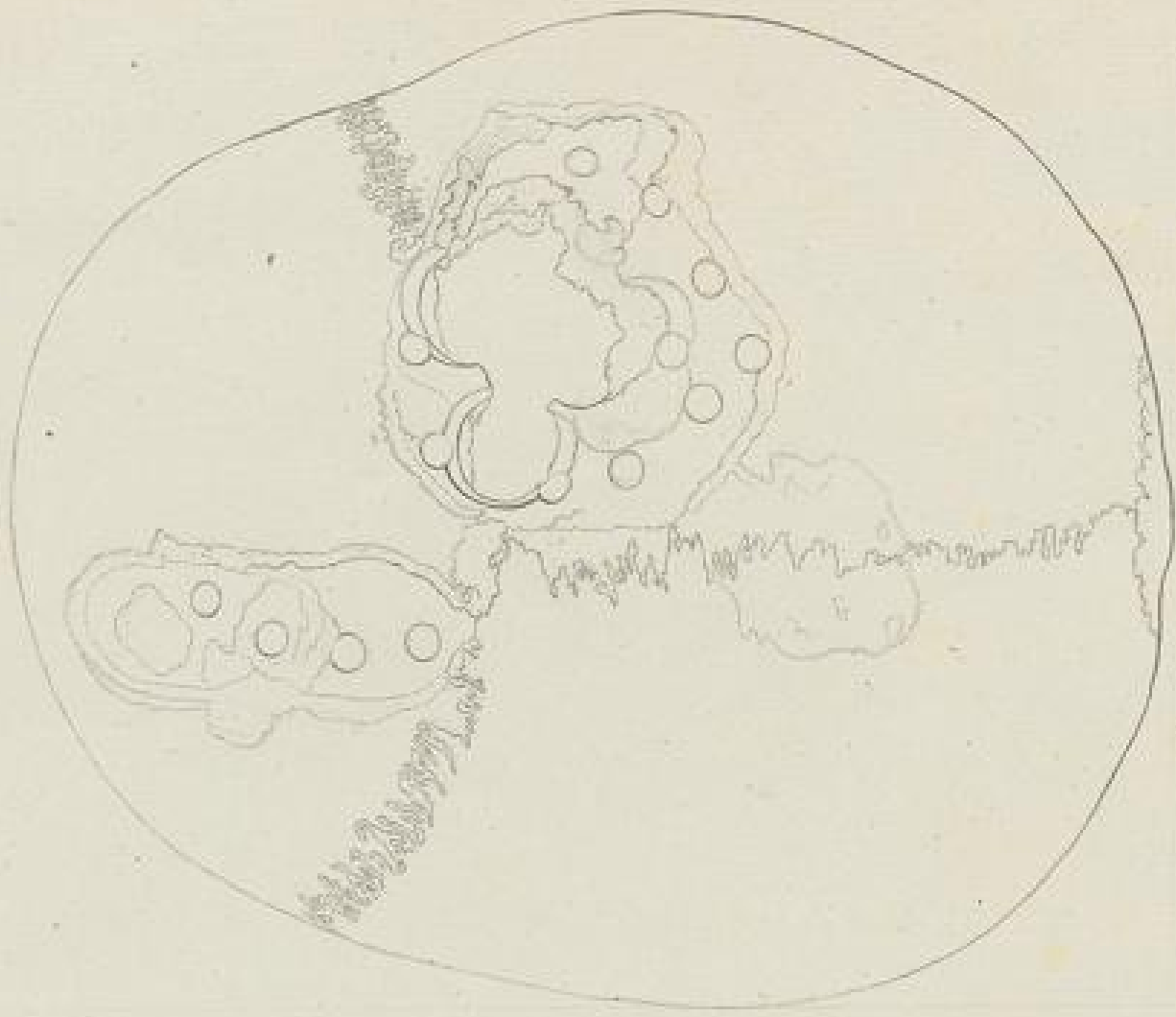
Georg Meissner del.



115



Christoph G. G. G.



77



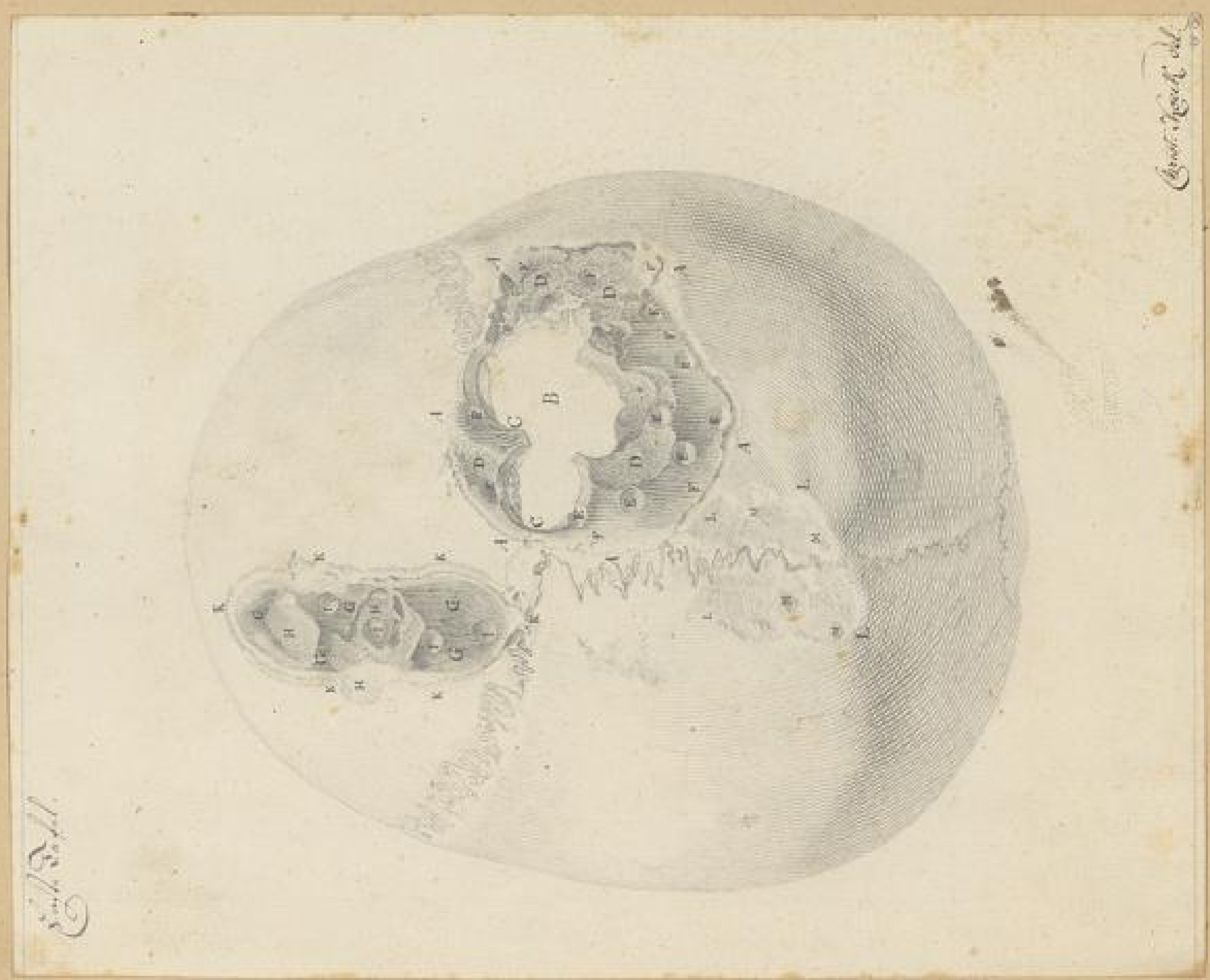


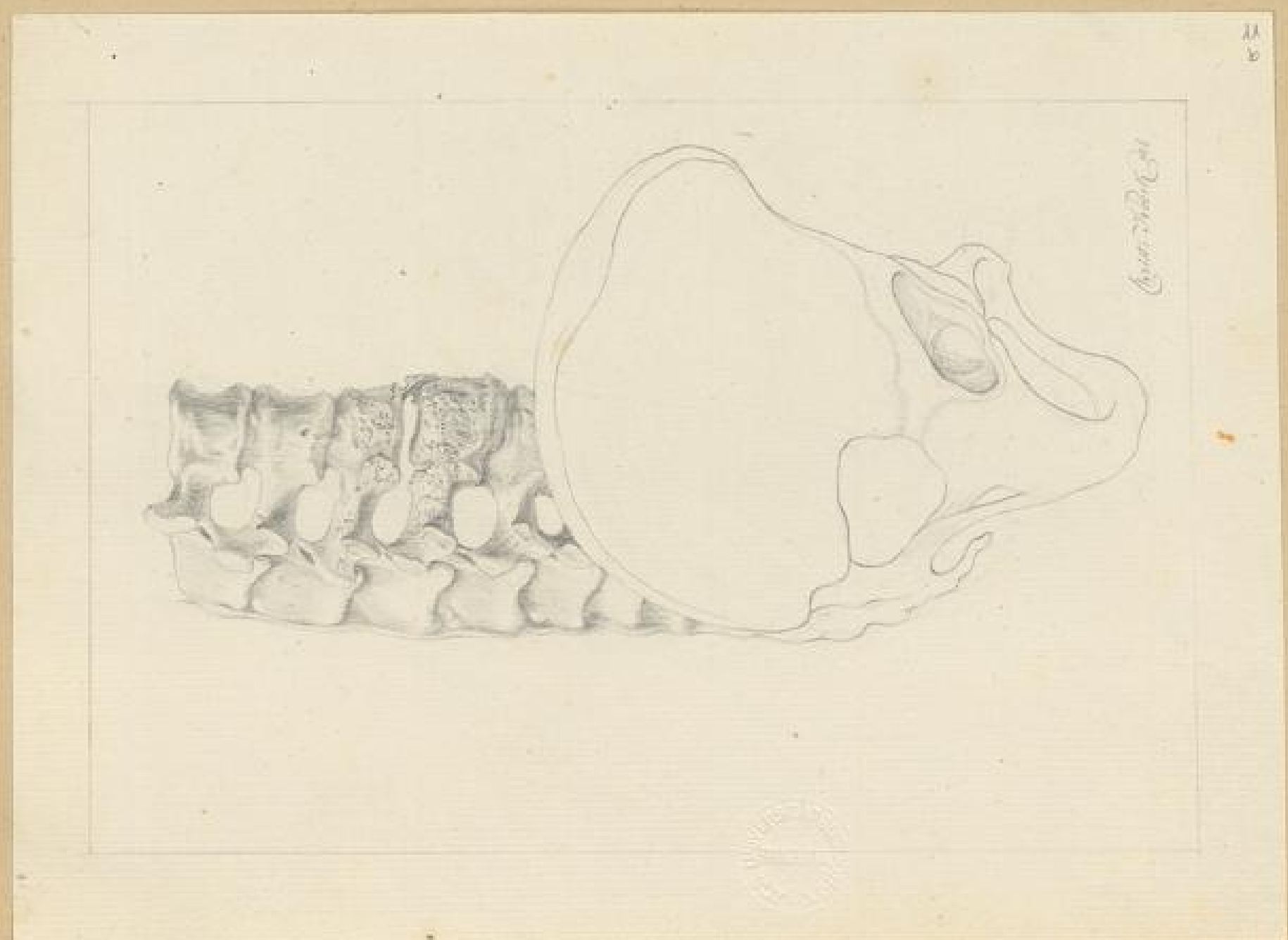
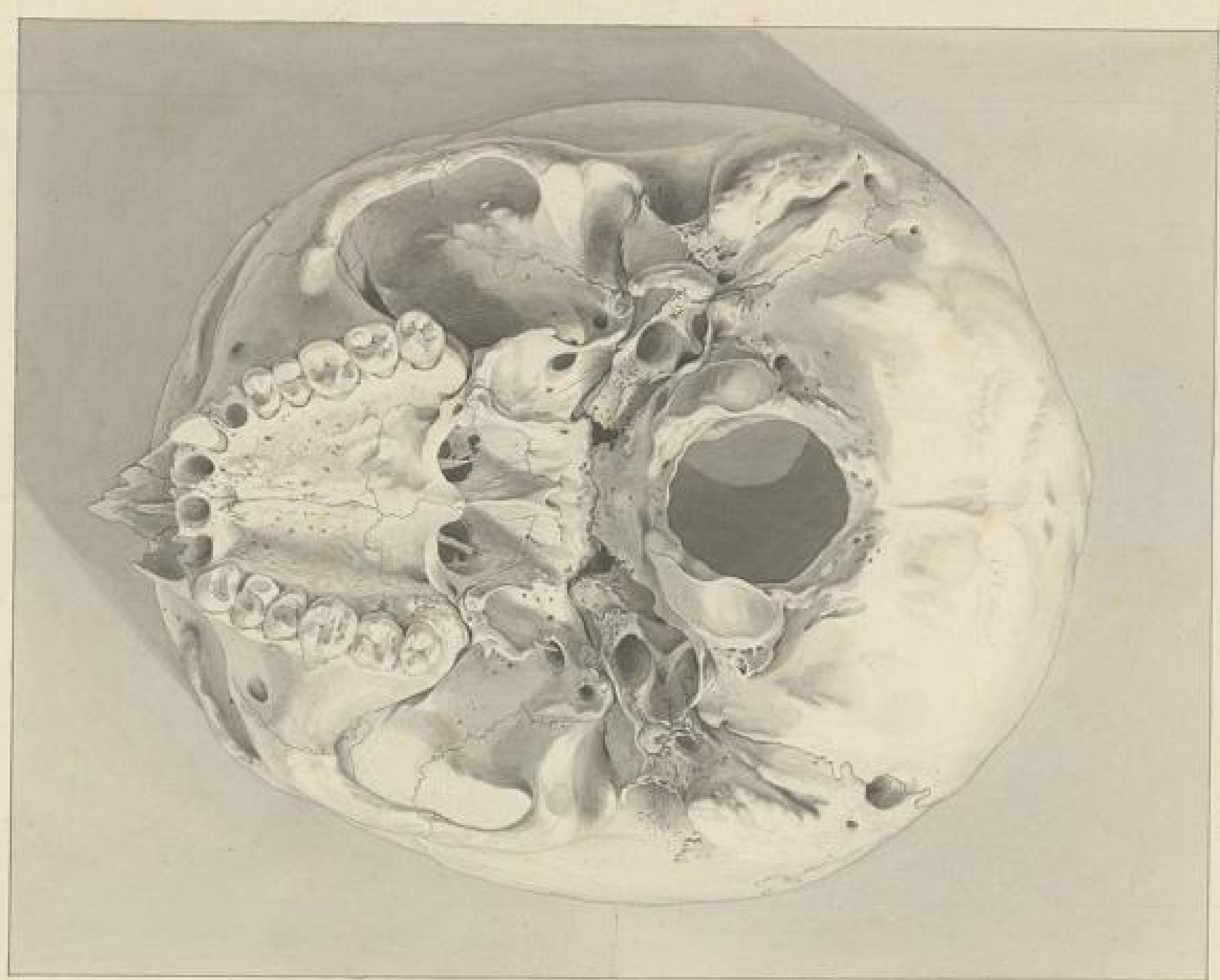
W. B. Hall

W. B. Hall



Ch. Beck delinavit. August Hammering pinxit.
Femur Scapulae cranium e musca Blumenbachii.



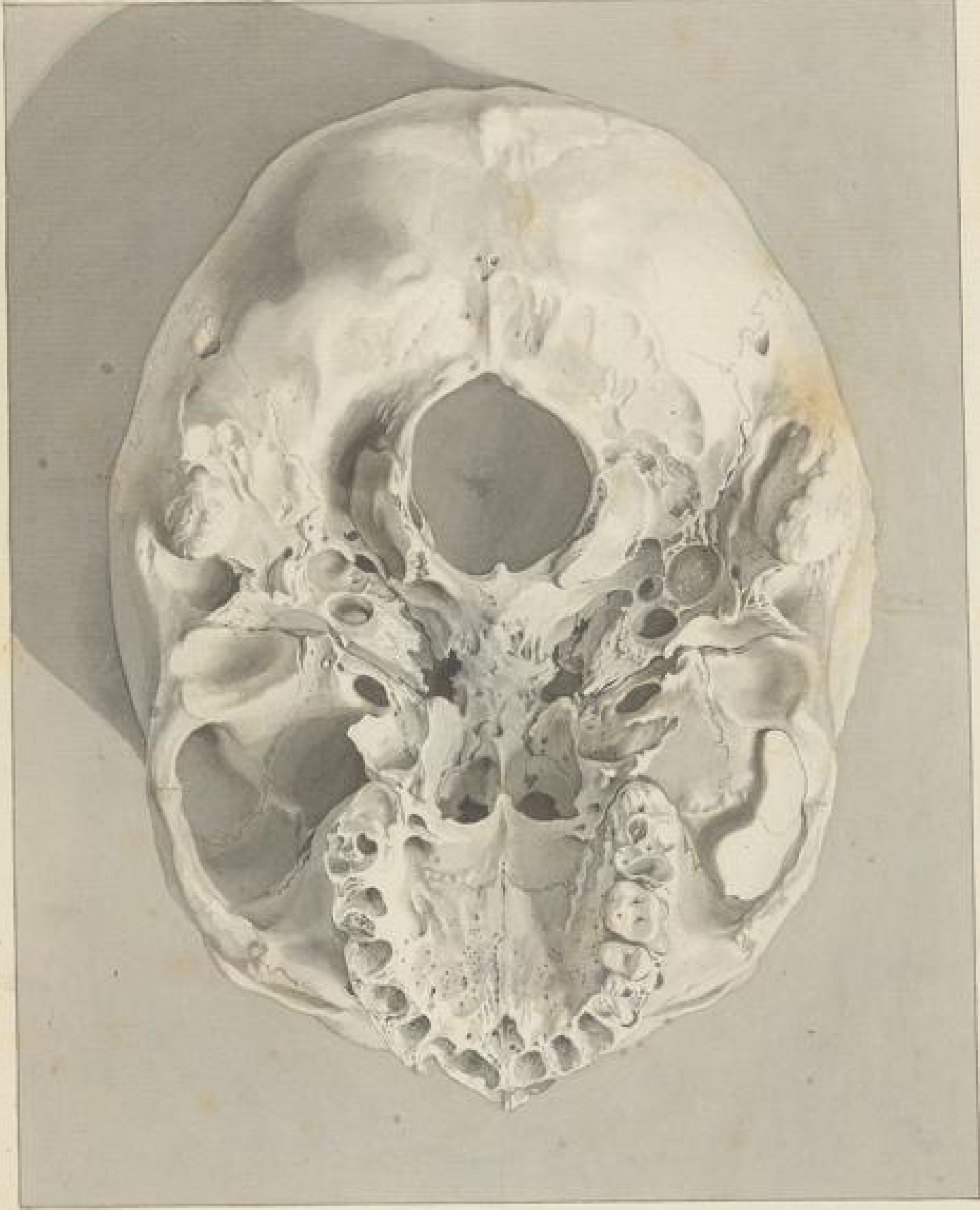


17

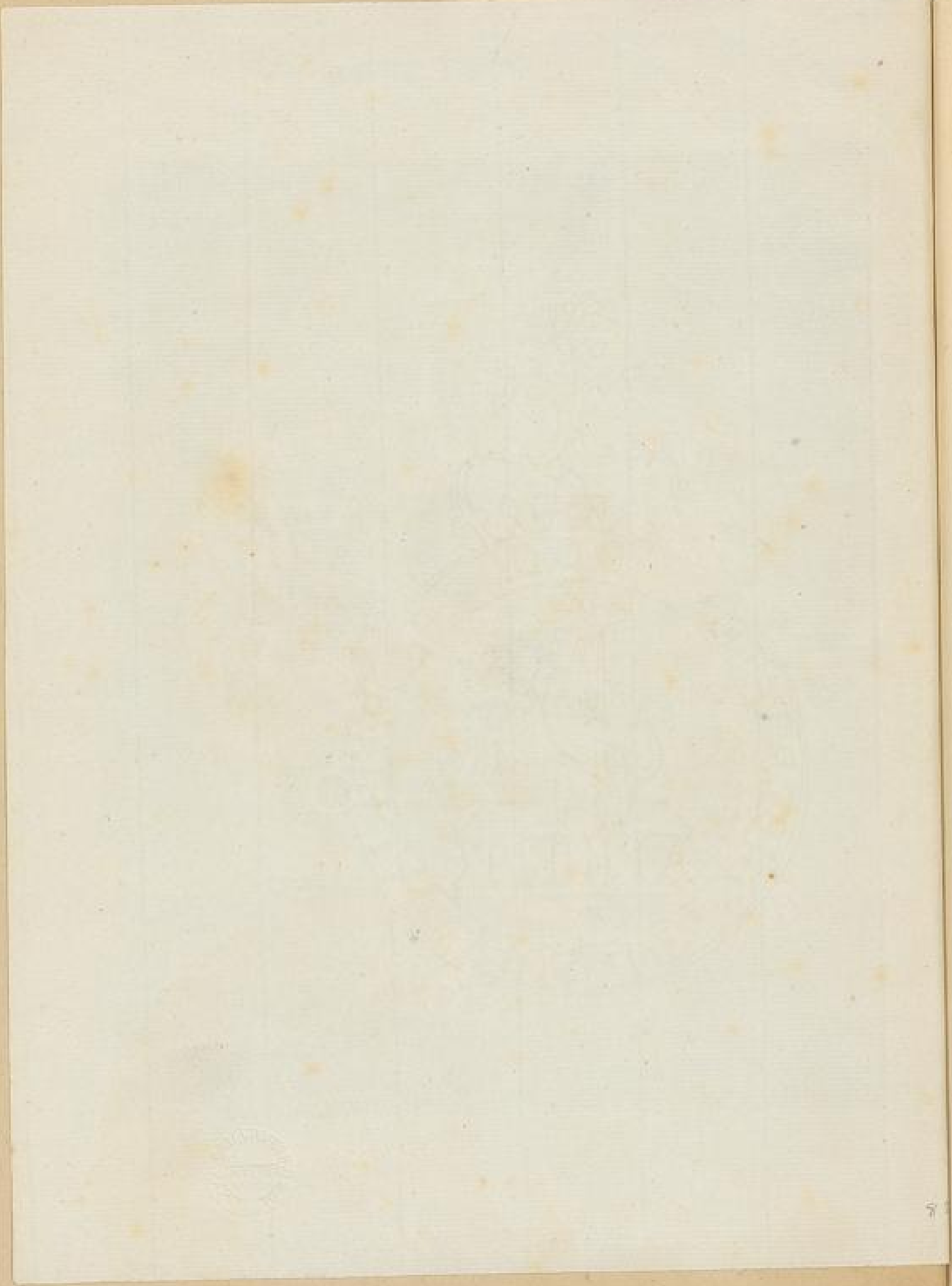
18

19

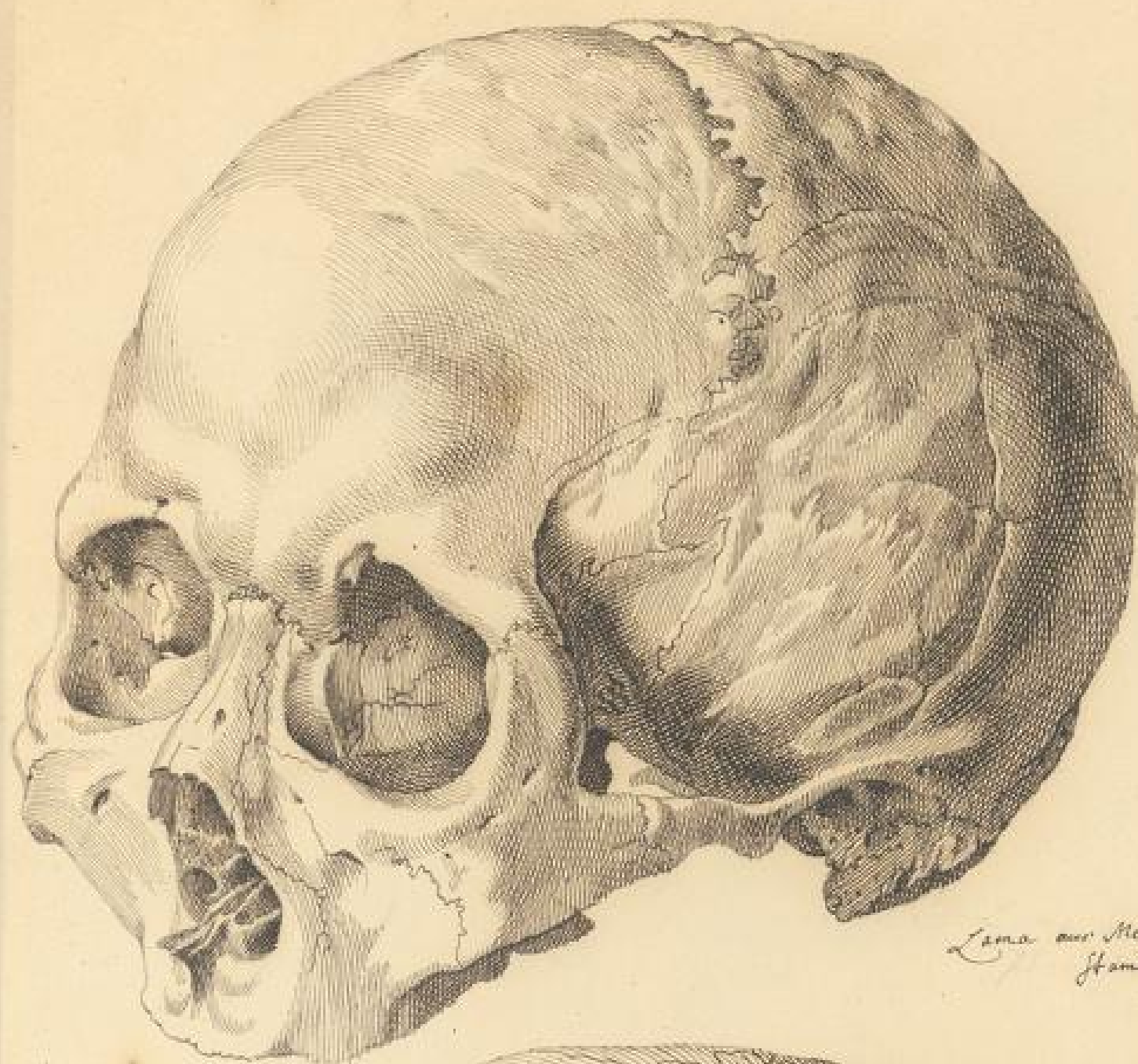
12



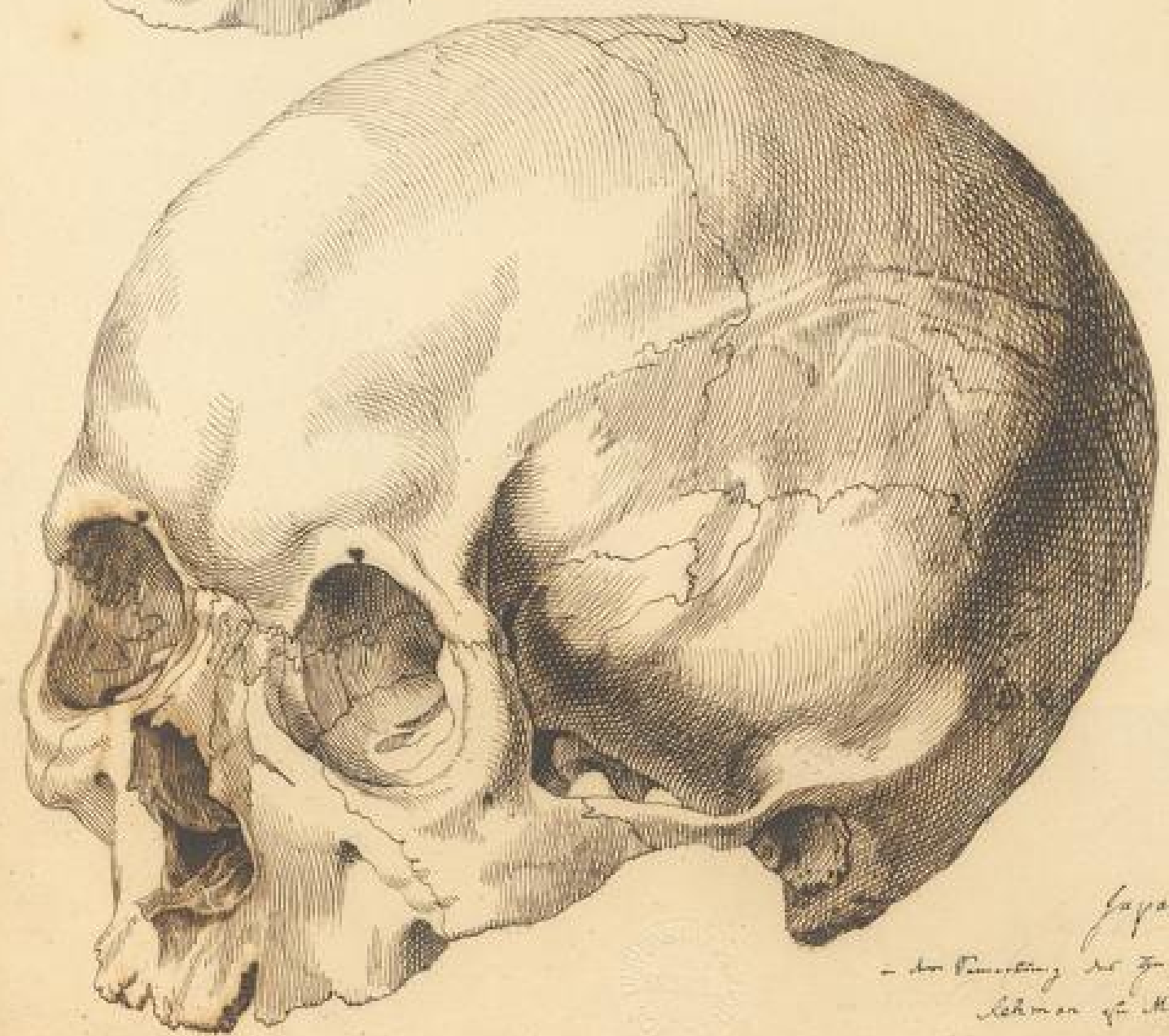
1. 25



13



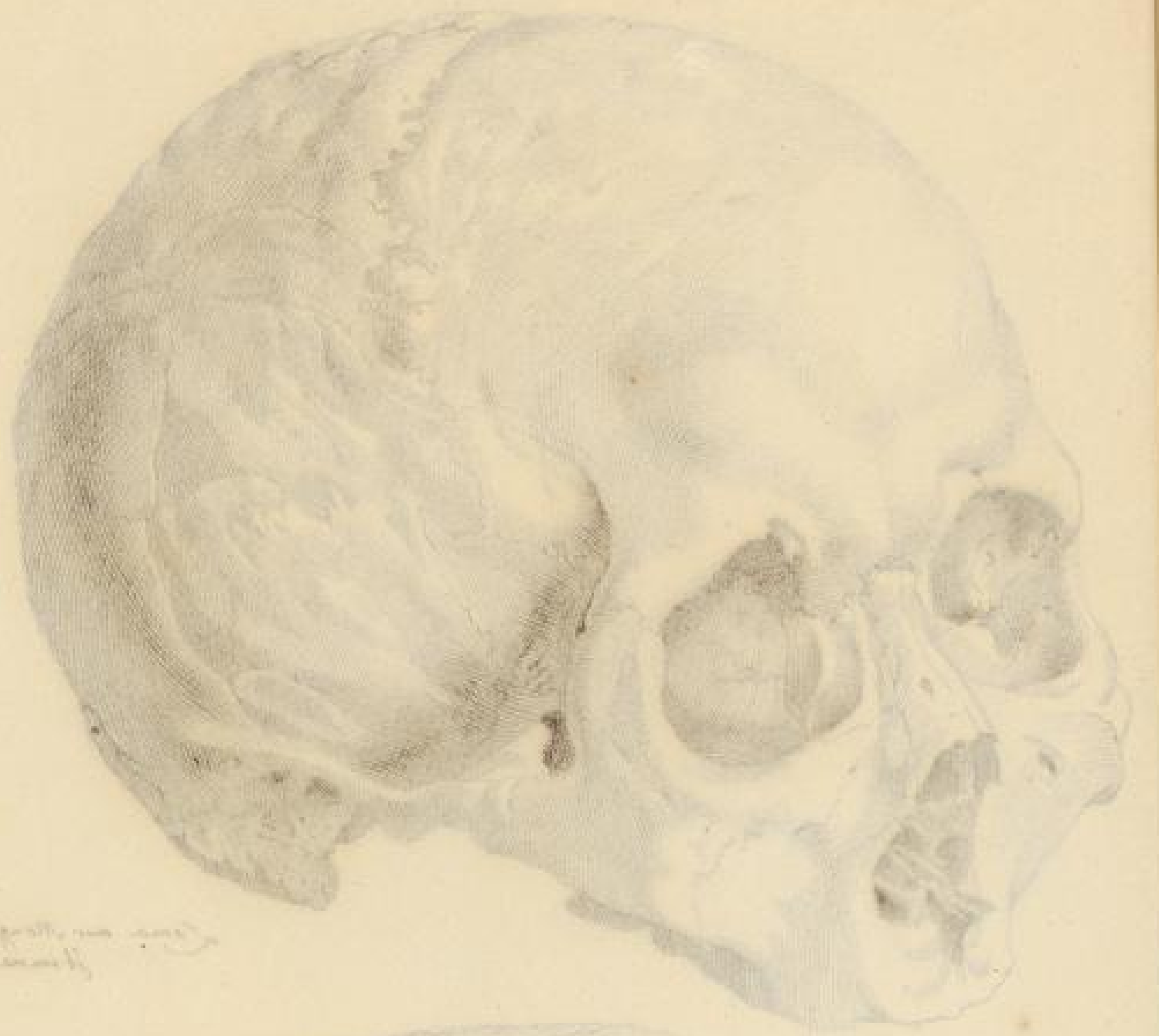
Lama aus Mongolien
Hamma.



Japaner
- im Pomeranien des Fr. Dr.
Schman von Hefen.

Ch. Kraus del.

1. 24



Handwritten text, likely a label or description, partially obscured and difficult to read.



Handwritten text, likely a label or description, partially obscured and difficult to read.

98

Small handwritten text or number at the bottom right corner of the engraving.





*Calamansi in Collectione Anatomica Senckenbergii
publ. 1788. perentur*

Ch. Beck ad m. d. d.



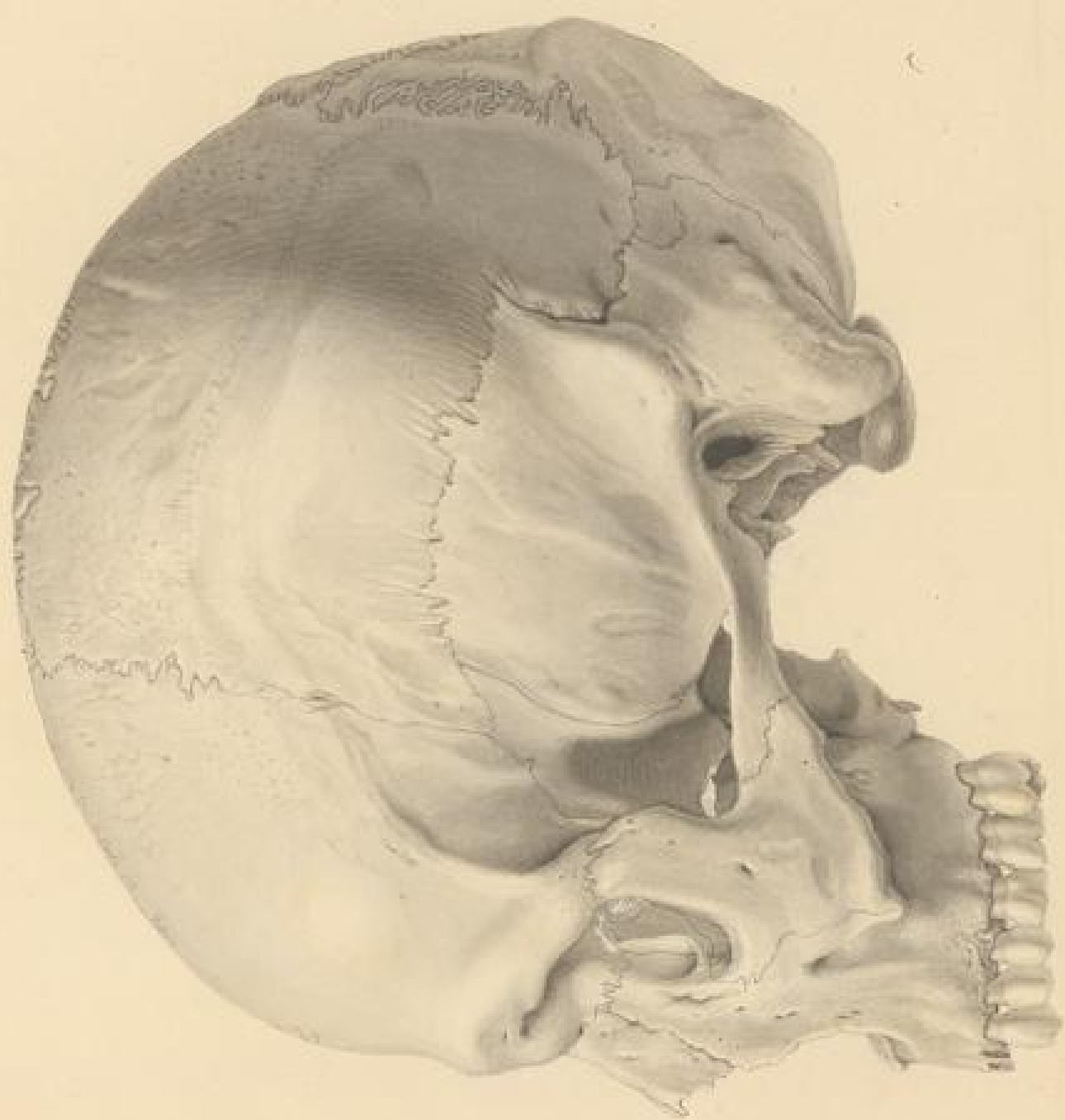
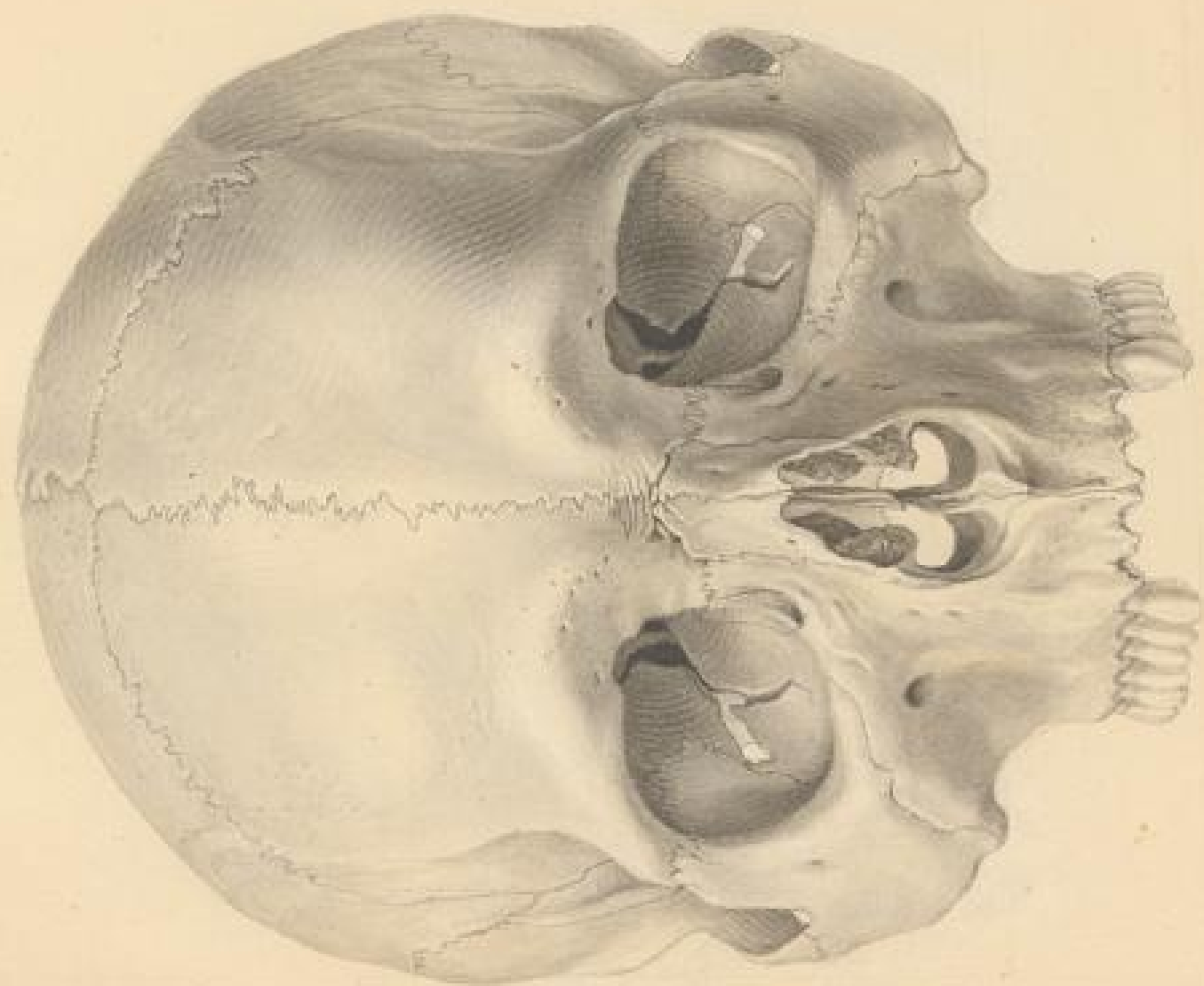
N. 24

von Hoffmann und ... (Faint handwritten text, likely bleed-through from the reverse side of the page)

of ...
...

...





*Columbarus st. Sen.
- Macaca sardaniensis. Monograph.*

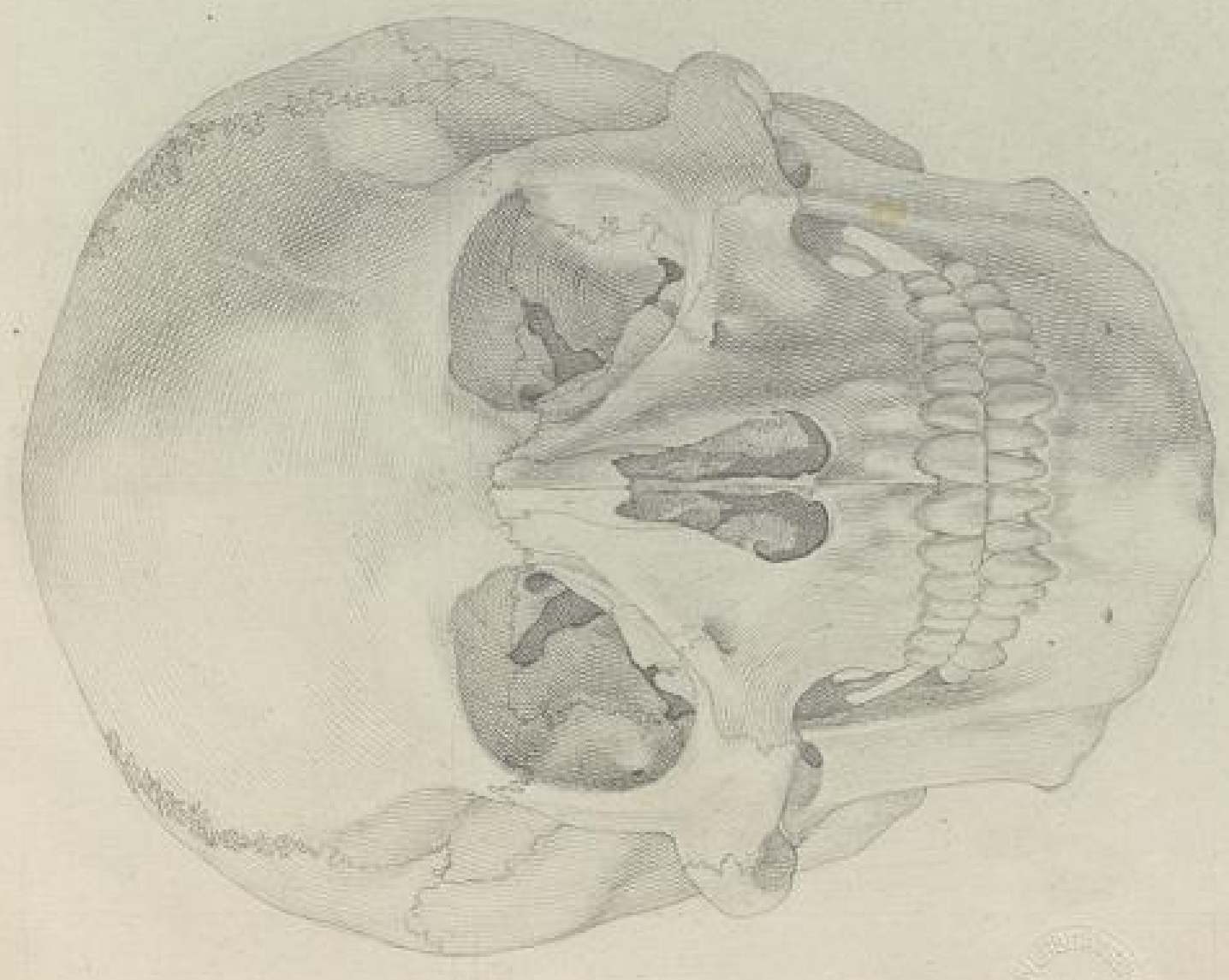
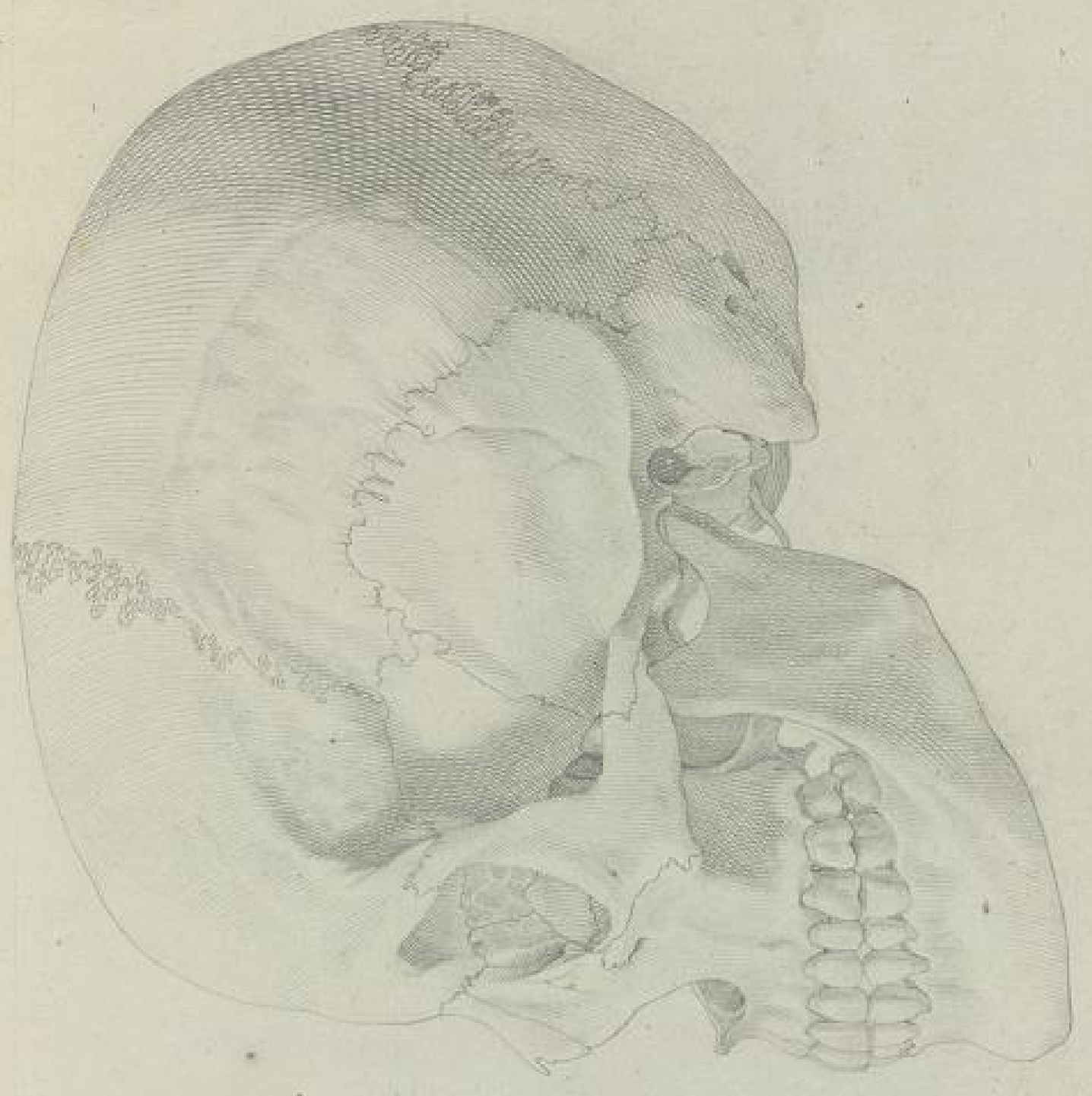
Ch. Schlegel ad nat. Del.



N. 25

1871
 1872
 1873
 1874
 1875
 1876
 1877
 1878
 1879
 1880
 1881
 1882
 1883
 1884
 1885
 1886
 1887
 1888
 1889
 1890
 1891
 1892
 1893
 1894
 1895
 1896
 1897
 1898
 1899
 1900





*Die menschliche Kopf- und Hirn- und Gehirnanatomie
 nach den neuesten Entdeckungen von J. C. Senckenberg
 und J. G. W. Walther, Frankfurt 1797.*



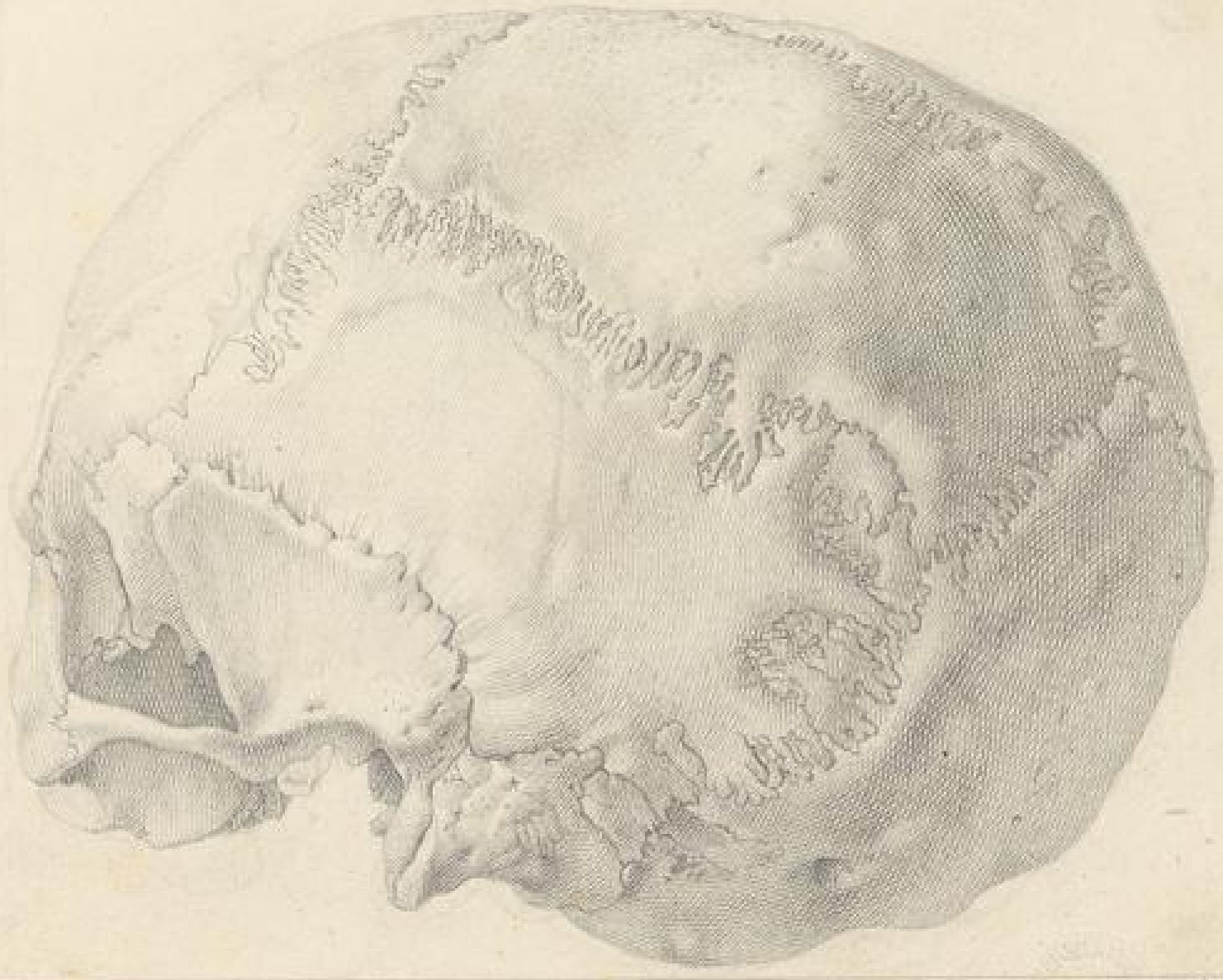
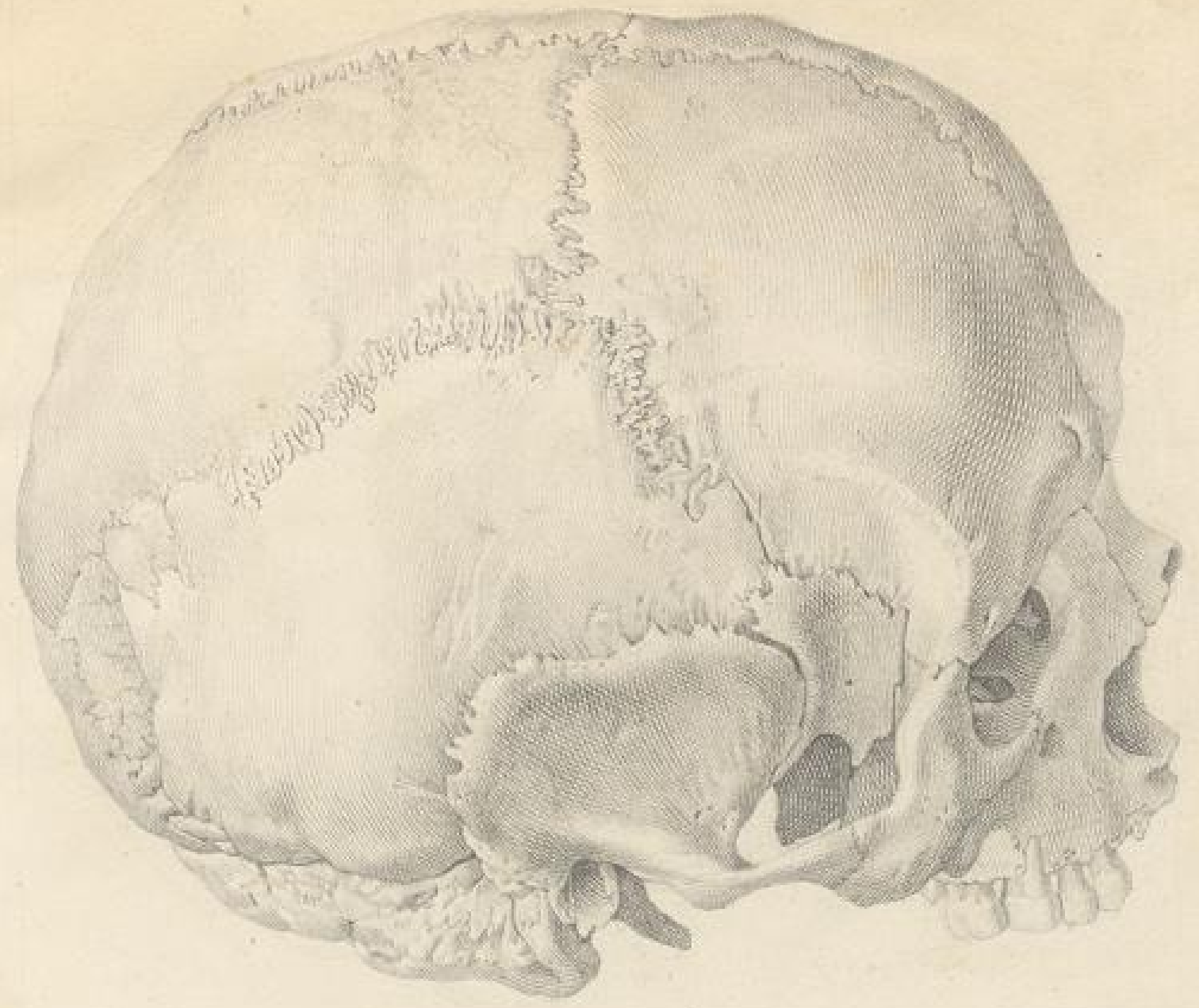
N. 21

1715

1715

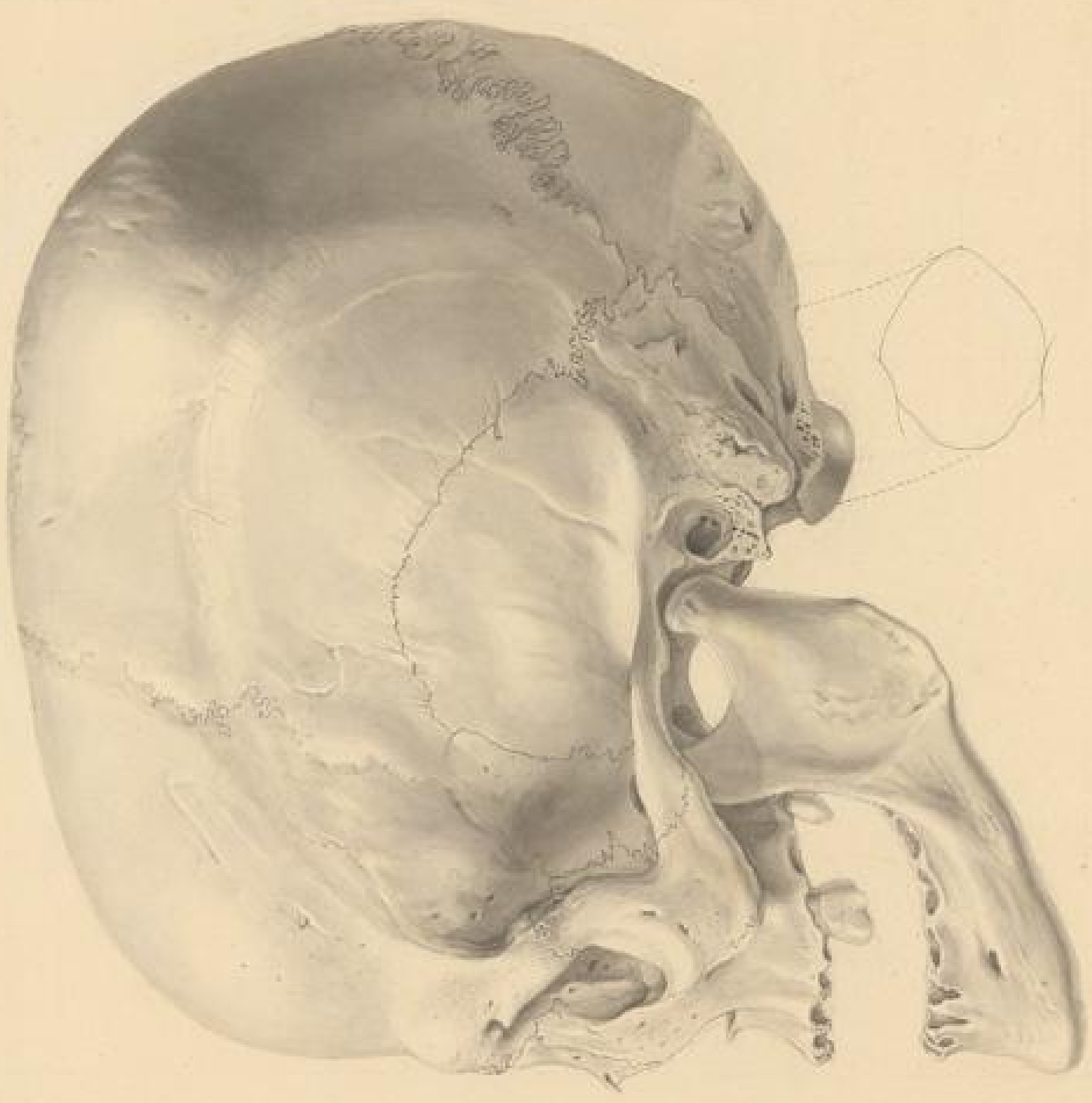


1715

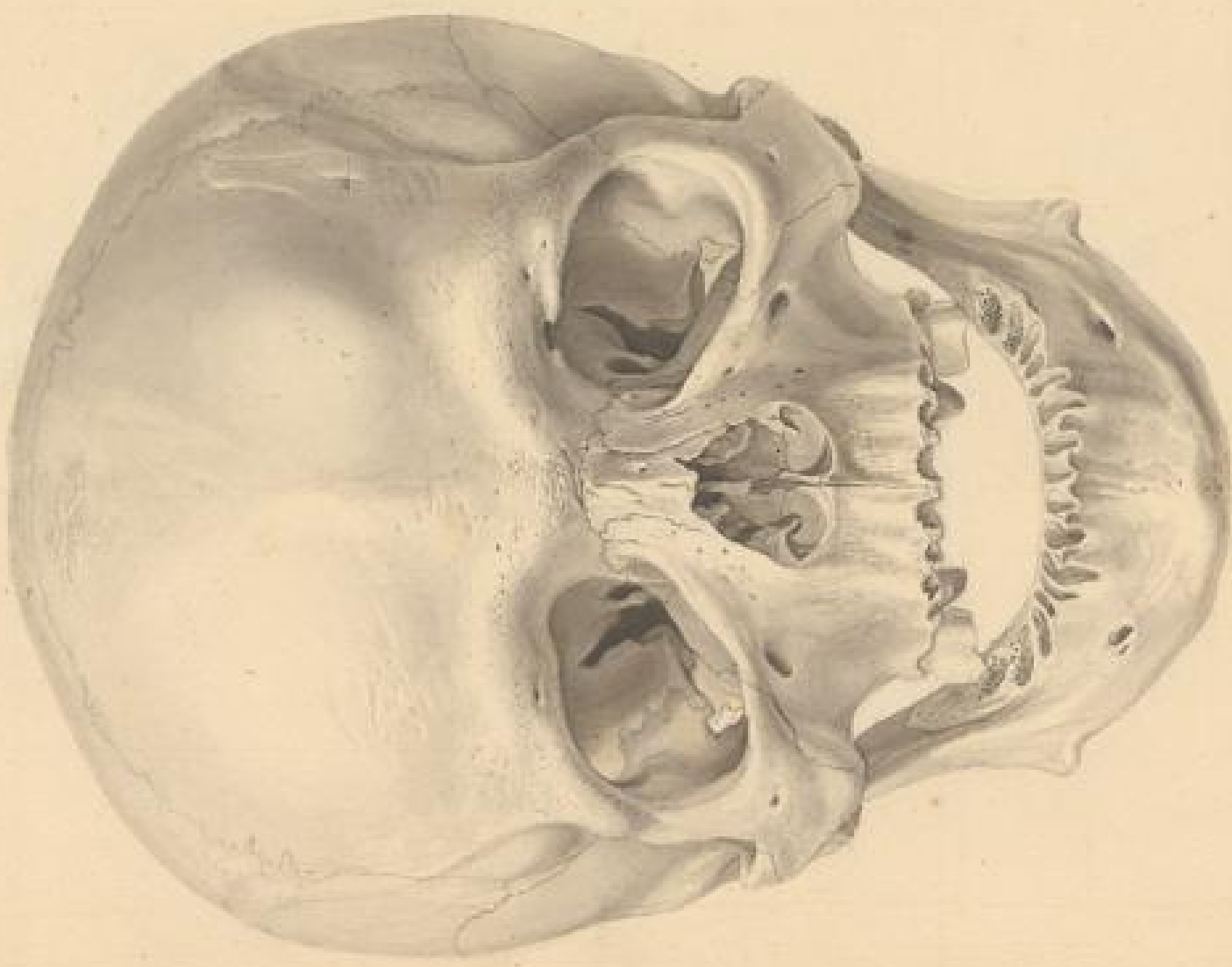


C. Rösch.

v. 24



Ch. Hensch pinx. 18

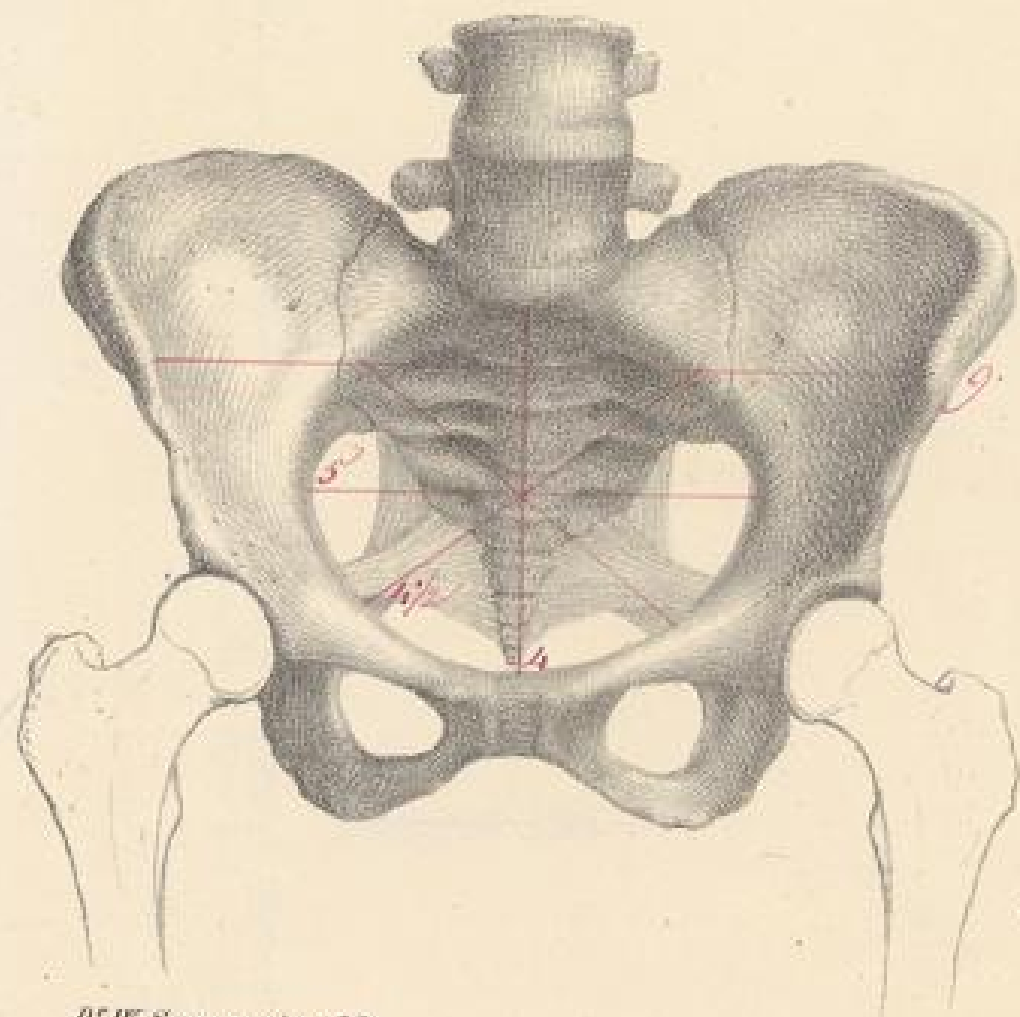
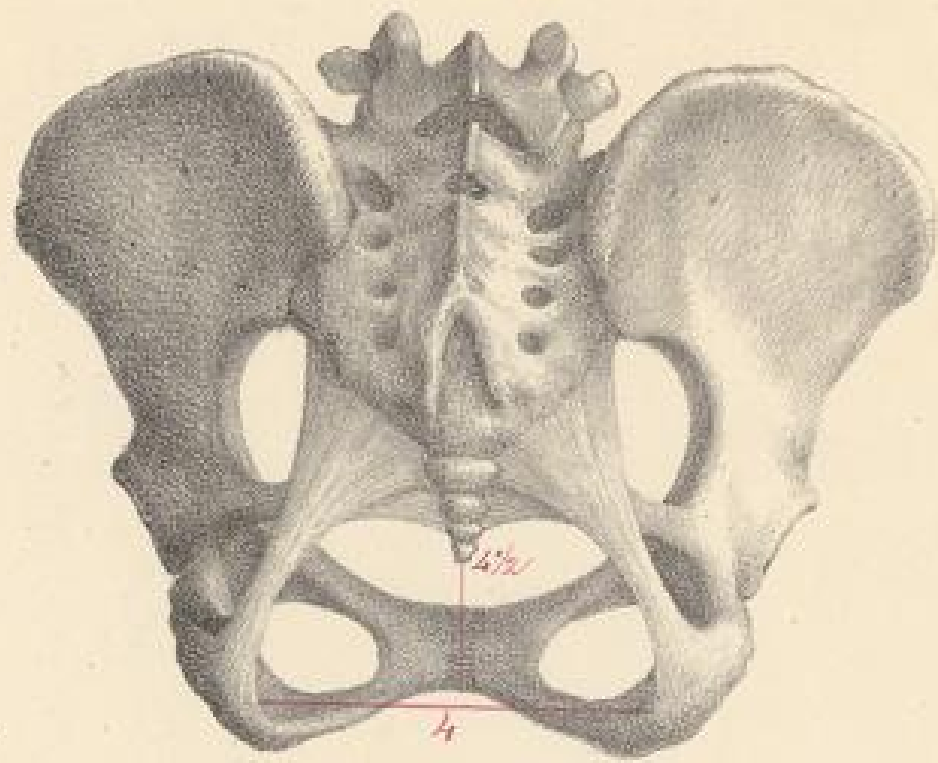


Bojsseman del.

n. 25



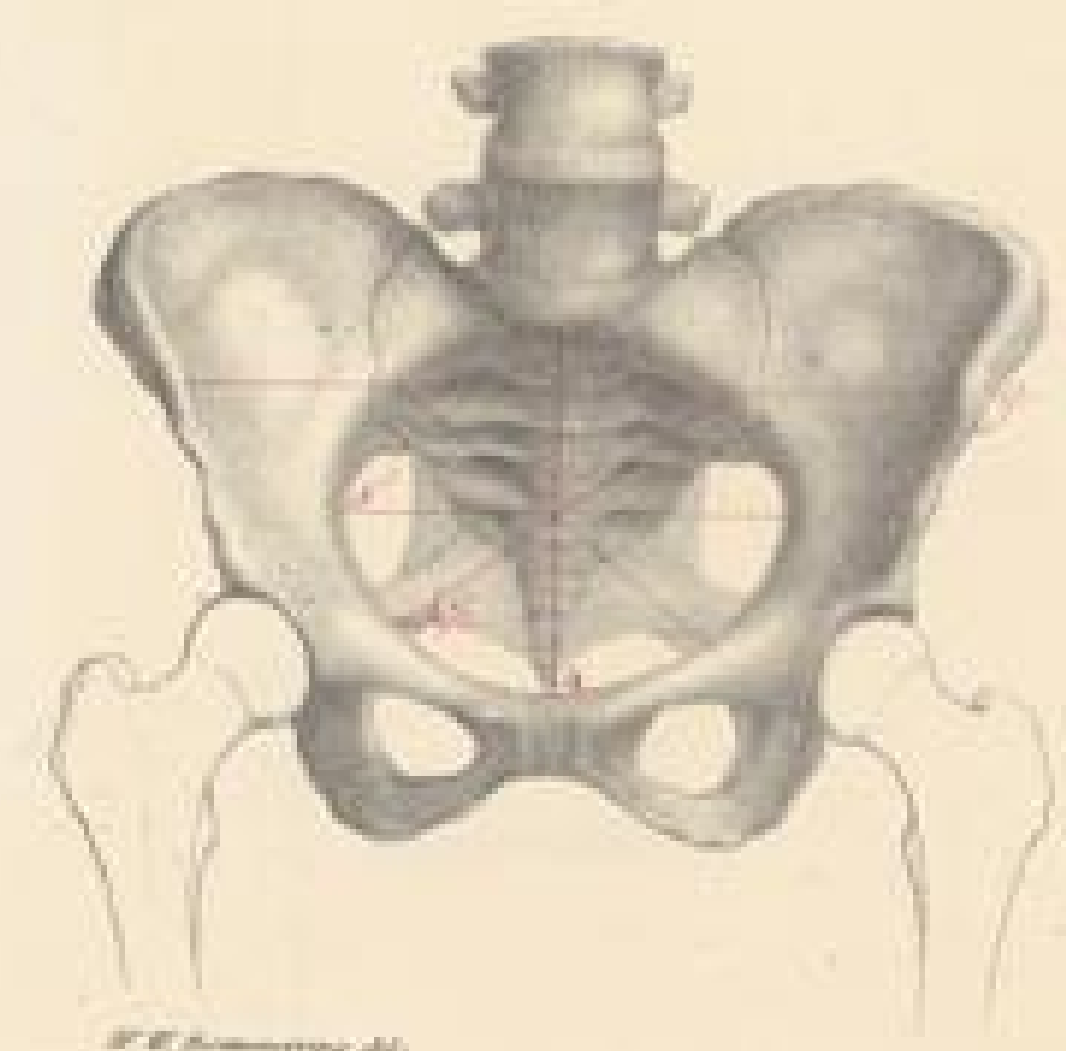
n. 25



D. W. Sommering del.



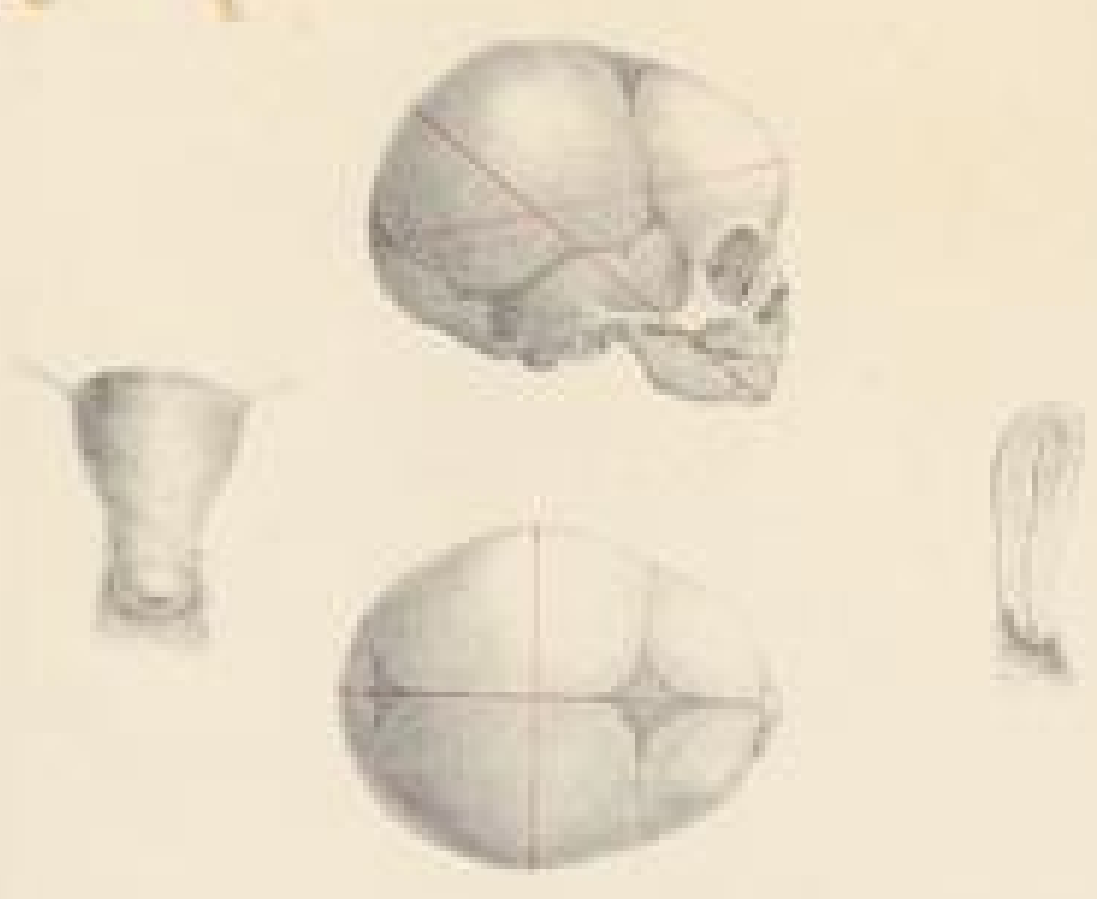
Scultetus sculpsit H. Willems del.



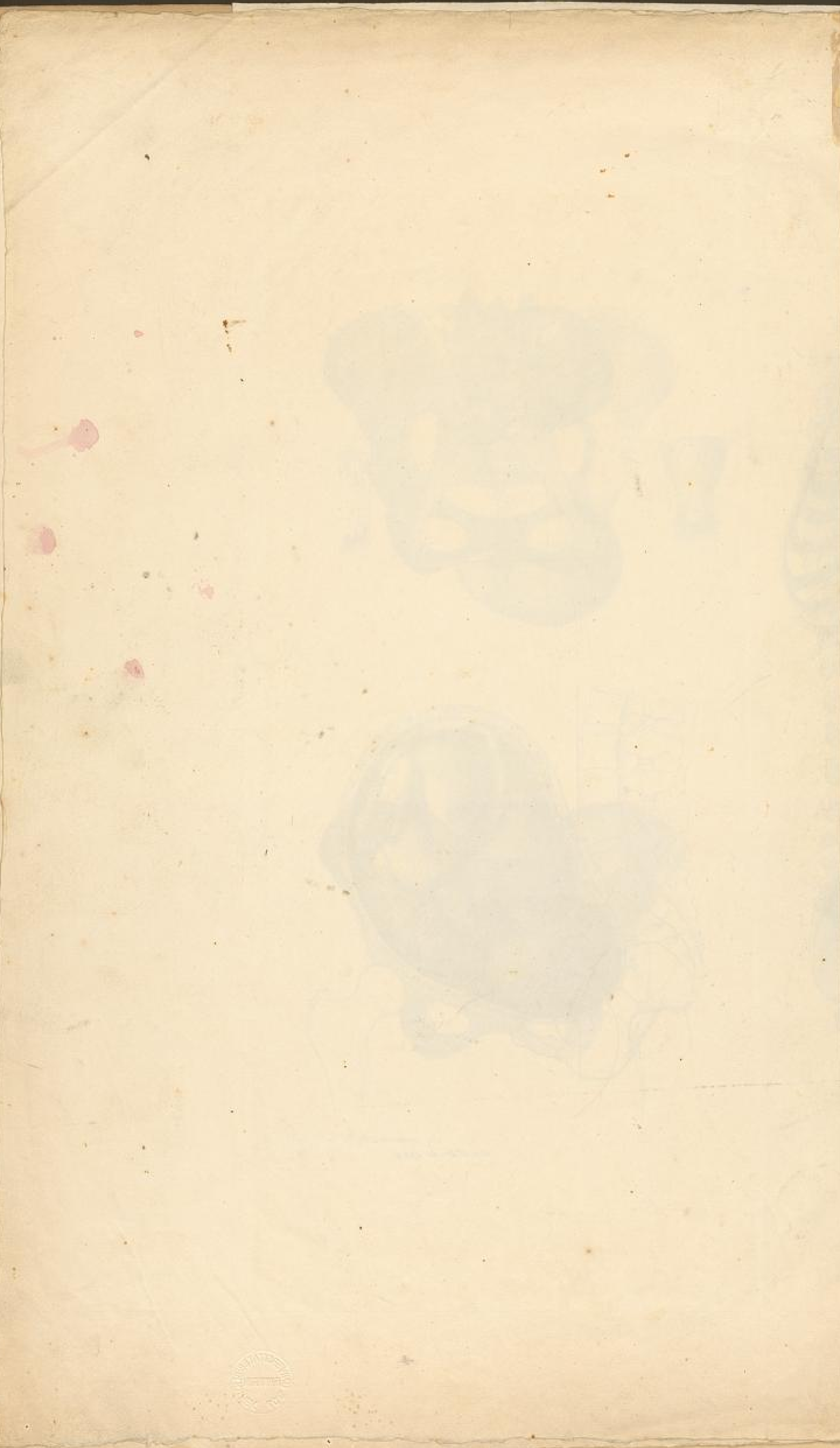
F. E. Schmorley del.



W. G. B. Schmorley del.

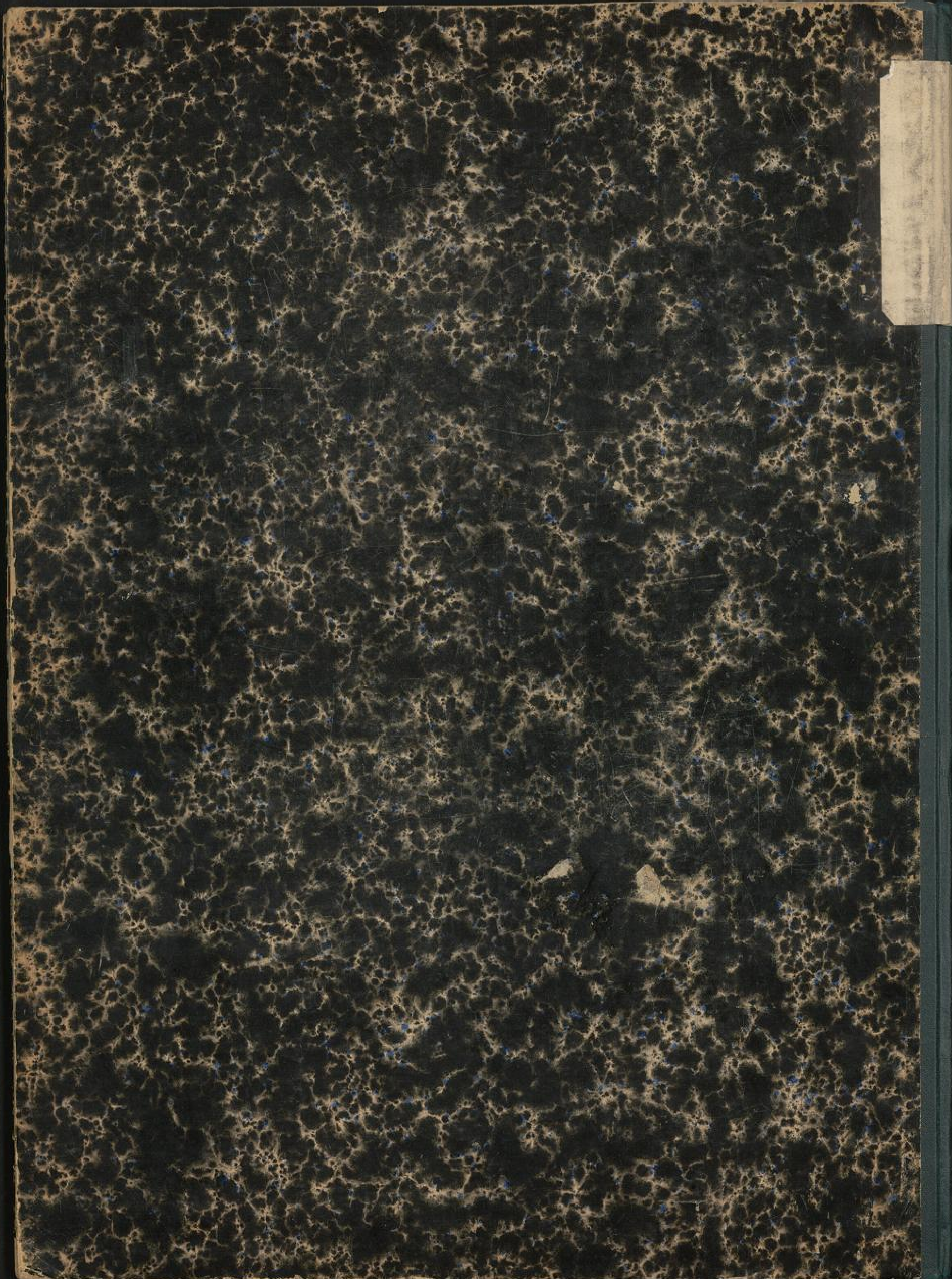


W. G. B. Schmorley del.



69
114





Fragment of a paper label with illegible text.